

- Probation & Parole
- Youth Services
- Corrections
- General Welfare

1973-1974

**ANNUAL
REPORT**

28367

DEPARTMENT
OF
WELFARE
AND
INSTITUTIONS



Commonwealth of Virginia

MILLS E. GODWIN JR.

Governor

ANNUAL REPORT

July 1, 1973—June 30, 1974

State Board of Welfare and Institutions

As constituted June 30, 1974

MRS. JOHN J. DEHART, JR. *Chairman*
Chesterfield

R. FRANKLIN HOUGH, JR., *Vice Chairman*
Salem

CLARENCE PRESTON PENN, JR., *Secretary*
Farmville

VICTOR J. ASHE*
Norfolk

HARVEY B. COHEN
Arlington

MRS. JANET MAYS
Norfolk

DR. PHILIP JAMES ALLEN
Fredericksburg

J. POWELL ROYALL, JR.
Richlands

MRS. CYNTHIA NEWMAN
Falls Church

*At the time of his death on March 9, 1974, Mr. Ashe was chairman of the board.

Department of Welfare and Institutions

WILLIAM L. LUKHARD, *Director*

ROBERT L. MASDEN, *Assistant Director*

S. P. HAIR, *Director*, Division of Administrative Services

HERBERT A. KRUEGER, *Director*, Division of General Welfare

RICHARD M. OLIVER, *Director*, Division of Corrections

WILLIAM E. WEDDINGTON, *Director*, Division of Youth Services

Probation and Parole Board

PLEASANT C. SHIELDS, *Chairman*

MORRIS L. RIDLEY, *Member*

W. K. CUNNINGHAM, JR., *Member*

MRS. MARGARET B. DAVIS, *Member*

NATHANIEL W. PERDUE, *Member*

Table of Contents

	Page
State Board of Welfare and Institutions	2
Organizational Chart.....	4
The Year in Perspective—A Review	7
FINANCIAL AND STATISTICAL TABLES	
Table I—Summary of Departmental Expenditures by Major Activity, Source of Funds Expended and Sources of Institutional Earnings	16
Table II—Cases and Average Grants—June 1953-1972. . .	17
Table III—Public Assistance: Cases Receiving Financial Assistance and Amount of Assistance by Program and Month	18
Table IV—Expenditures for Public Assistance and Hospitalization of the Indigent According to Counties and Cities	19
Table V—Hospitalization Under the State and Local Program for the Indigent and the Public Assistance Programs	22
Table VI—Child Welfare Services Provided by Local Departments of Public Welfare	23
Table VII—Children Under Care of the Division of Youth Services.....	24
Table VIII—Virginia Training Schools—Per Capita Cost Statement	29
Table IX—Virginia Correctional Institutions—Per Capita Cost Statement.....	30
Table X—Distribution of Population in the Correctional Institutions	31
Table XI—Comparison by Years of Felons Committed to Receiving Unit of Correctional System.....	32

VIRGINIA DEPARTMENT OF WELFARE AND INSTITUTIONS

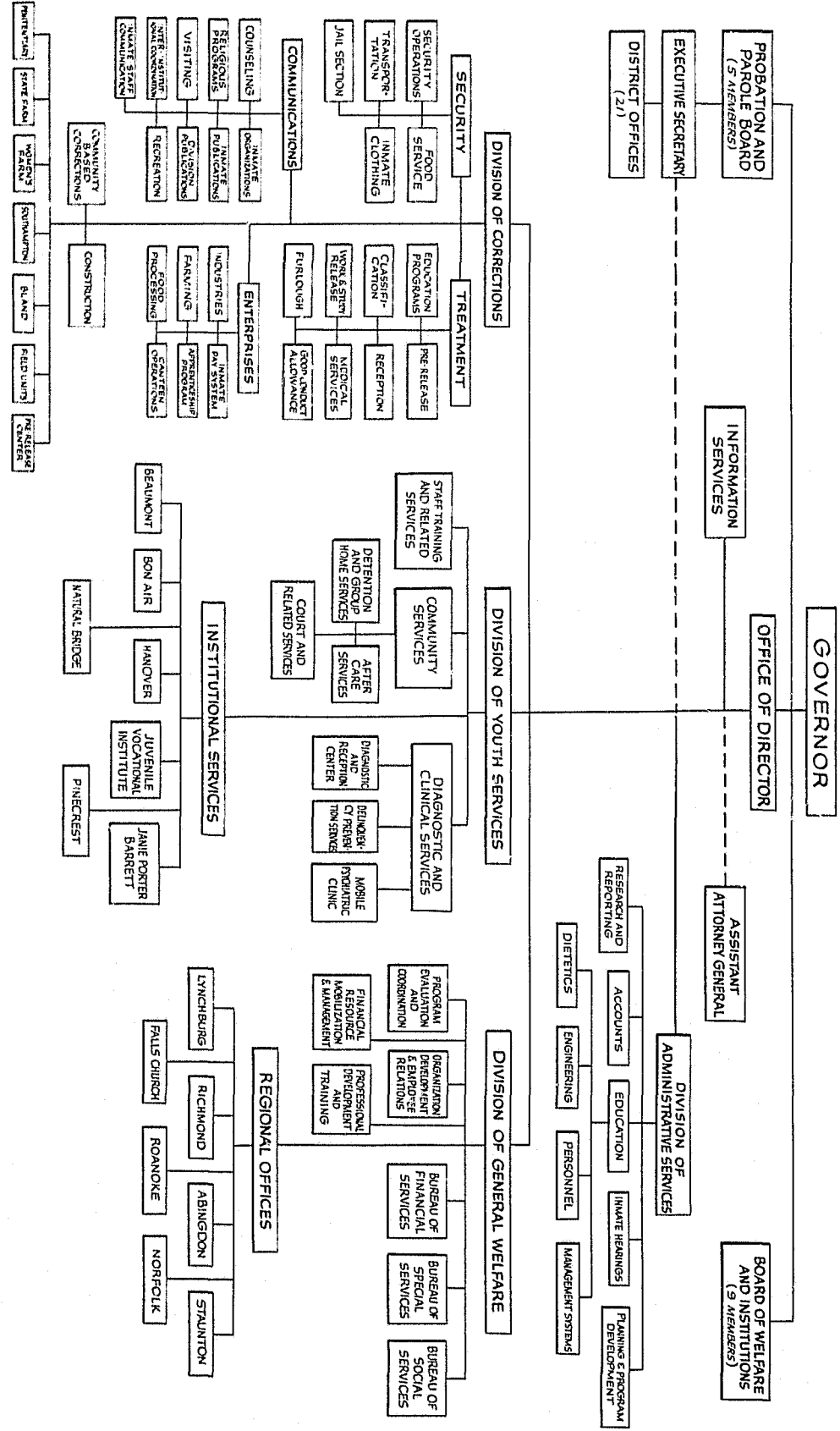


Table XII—Misdemeanants Committed to the State Farm, Bland Correctional Farm, Southampton Correctional Farm, Bureau of Correctional Units and State Industrial Farm for Women According to Court of Commitment.....	33
Table XIII—Felons Committed to the Virginia State Correctional System (By Court Committed from, According to Race and Sex)	35
Table XIV—Jail Commitments and Prisoner Days by Months	38
Table XV—Jail Commitments and Prisoner Days for the Past Ten Years	38
Table XVI—Probationers Under Supervision.....	39
Table XVII—Parolees Under Supervision.....	40
Table XVIII—Pardonees Under Supervision	41
Table XIX—Parolees, Pardonees and Probationers Received for Supervision	42
Table XX—Virginia Cases Supervised by Other States and Out-of-State Cases Supervised by Virginia	44
Table XXI—Virginia Cases under Supervision by Counties and Cities	45
Table XXII—Probation Cases Received for Supervision by Counties and Cities	47
Table XXIII—Warrants Issued and Actions Taken	48

The Year in Perspective

This is the final report of the Department of Welfare and Institutions.

The year 1973-74 represented both an end and a beginning. The 1974 General Assembly enacted legislation separating the Department into a department of welfare and a department of corrections, effective July 1, 1974.

The Department of Welfare and Institutions was created in 1948 through merger of the old Department of Public Welfare and the former Department of Corrections.

The action again placing these functions of government in separate state agencies was recommended by outgoing Governor Linwood Holton, returning Governor Mills E. Godwin, Jr., the State Crime Commission and others, including the Board of Welfare and Institutions.

It was a turbulent year for the Department, particularly for its Division of Corrections. It was the year when, perhaps inevitably, rapidly changing times marked by a sudden public awakening to the problems of the nation's prisons overtook a system afflicted by the results of long-standing public apathy and neglect.

When these two forces met, an outcry arose from citizens, officials and investigative and study groups. The catalyst was a series of escapes, disturbances and other occurrences reflecting in many cases deficiencies in facilities, staffing or resources.

While strides toward a modern, innovative correctional system had been made through the years, these were overshadowed by shortcomings brought on by the traditional unpopularity of correctional programs and resulting budgetary restrictions.

After the separation legislation was enacted, the Department began preparing for the establishment of the two new agencies.

William L. Lukhard, director of the Department of Welfare and Institutions, was appointed by Governor Godwin to become commissioner of the new Department of Welfare, which was to absorb the Division of General Welfare.

The Governor chose his senior executive assistant, Jack F. Davis, to become director of the new Department of Corrections when it began operations. It would consist of three operating divisions. The Division of Youth Services would remain intact. The Division of Corrections would be renamed the Division of Adult Services. A new division, the Division of Probation and Parole Services, would

take over the administrative responsibilities of the Probation and Parole Board, which would continue its adjudicatory functions.

The 1974 General Assembly also created the Rehabilitative School Authority to be composed of all educational facilities operated in the Department of Corrections' institutions. The Authority's board consists of three gubernatorial appointees, plus the directors of the divisions of Adult Services and Youth Services, the Chairman of the Probation and Parole Board, and the director of vocational education for the Virginia Department of Education. The board will employ a superintendent and present its own budget to the General Assembly.

Among top-level personnel changes to occur during the year was the appointment by Governor Godwin of Nathaniel W. Perdue, executive secretary of the Probation and Parole Board, as a member of the board. Perdue succeeded Charles P. Chew, the board's long-time chairman and director, who retired after a thirty-year career in probation and parole work.

Richard M. Oliver, who had been superintendent of the State Farm, became Director of the Division of Corrections.

Despite the controversies, criticisms and difficulties, the Department, each of its divisions and its personnel continued to serve its clients and the Commonwealth with diligence, determination and dedication.

As the year ended and the Department divided into separate agencies, the men and women of the Department of Welfare and Institutions resolved to carry on in that same spirit.

DIVISION OF CORRECTIONS*

The Division of Corrections found itself under intense public security brought about by several well publicized escapes and unusual incidents at the institutions; investigations by a special grand jury and by the State Crime Commission; and increased interest on the part of citizens and legislators in programs and facilities for adult offenders.

A select committee of departmental employees developed minimum standards for the operation of all adult institutions. Areas studied included classification; security; discipline; work, education, and recreation programs; health, food, library, and

*Became the Division of Adult Services effective July 1, 1974.

chaplain services; inmate activities and privileges; and physical facilities.

Another major study produced a Blueprint for Action in Virginia Corrections. The "Blueprint" provided specific proposals for upgrading field units, suggestions for revising the classification process, new definitions of custody status, and recommended expansion of the wage incentive plan to all industrial programs.

A central furlough committee was established for the purpose of reviewing furloughs approved at the institutional level. The committee is charged with notifying the chief law enforcement officer and the Commonwealth's attorney of the jurisdiction to which an inmate is to be furloughed, and the same officials in the sentencing jurisdiction.

Among new guidelines issued were those establishing uniform regulations for inmate transportation, institutional count procedures, visiting, inmate grievances, educational release, and community activities.

Security at the State Penitentiary was increased by the division of two cellblocks into quadrants, improved lighting, the purchase of television surveillance equipment, and the utilization of metal detectors. In February, a relief valve was provided for the Penitentiary's receiving unit with the conversion of a cellblock at the State Farm, Powhatan, for use as an additional receiving and classification center for felons.

Governor Godwin announced in June that correctional officers would receive a one-step pay increase on July 1 in addition to the one-step increase for all state employees on that date. With these two steps, the range for qualified correctional officers is now \$7,344 to \$9,600. The Governor said that an additional two-step raise for correctional officers would be among the highest priorities proposed to the 1975 legislature.

A new facility was added in August with the leasing of the former Norfolk City Jail Farm property. The opening of the institution, St. Brides Correctional Center, made possible the conversion of the former Tidewater Correctional Unit to a work release unit. St. Brides also has housed inmates engaged in the final phases of a contingency management program. The Center operated under the jurisdiction of the Bureau of Correctional Field Units until the end of the fiscal year, at which time it was upgraded to major institution status.

In April, Governor Godwin ordered an inspection team to visit each of the state's correctional installations where wooden barracks

are still in use and to report any improvements needed. In June it was announced that \$340,000 would be expended on repairs and equipment at the 10 "temporary" facilities.

Other major changes within the Bureau of Correctional Field Units included the establishment of three geographic areas—Northern, Western, and Eastern—each with an area administrator.

The 1974 session of the General Assembly passed legislation striking the requirement that 1,600 inmates per day be furnished for road work; the Director of Corrections now furnishes inmate labor subject to availability.

Three buildings to be used for vocational training in air conditioning and refrigeration, general building trades, and welding were completed at three field units.

Six field units were converted into all misdemeanor housing, making it possible to assign misdemeanor inmates within a reasonable distance of their homes, as well as separating them from felon inmates.

The Floyd Correctional Unit, which was closed in February, was reopened in June to house geriatric inmates.

The Pamunkey Unit was closed during the year, with its agricultural operations being transferred to the State Farm. Farming operations at other field units were phased out with the exception of vegetable gardens and the Wise Correctional Unit's apple orchard.

Three field units (two of them "temporary" facilities) were removed from the Bureau's supervision and placed under the jurisdiction of the Pre-Release Activities Center. These "ACE" facilities (Adult Correctional Enterprises) are the former Tidewater, Woodbridge, and Pulaski Correctional Units. They house work release inmates, and the former Pulaski unit houses study release inmates as well.

The Harrisonburg Correctional Unit was converted from both work and study release to a total work release unit. Work release and study release were discontinued at the Pocahontas Correctional Unit in order that the facility might be utilized to help reduce the population at the Penitentiary.

A 15-month program was launched in May with the aim of improving the reading and mathematics skills of offenders under age 21 who have not received the equivalent of a high school diploma. The project is financed through Title I funds (Elementary—Secondary Education Act,) employs Virginia Commonwealth University instructors, and is operating at all the major institutions, plus several

field units. In addition, individually prescribed instruction (IPI) was introduced at two institutions.

Several Penitentiary projects, including the newly formed Creative Workshop and the Spring Street Free Theater, received much favorable attention. Also during the year, the Penitentiary hired its first female correctional officers.

The Penitentiary's Spring Street Jaycees were named the state's most outstanding chapter and the nation's most outstanding institutional chapter. The Jaycee chapter at the State Farm, Pcwhatan, won second place honors in the national competition.

The State Board adopted amendments to the Rules and Regulations for the Administration of Local Jails and Lock-Ups and approved minimum standards for the employment of paramedics. In addition, the jails section held its fourth annual jail management seminar.

Legislation was passed in 1974 allowing the state to reimburse localities for the salaries of treatment, classification, and other personnel employed by jails; previously, such reimbursement was allowable only for physicians and other medical personnel.

Also as a result of 1974 legislation, a local governing body may enter into agreements with hospitals or private clinics for the purpose of securing medical services for jail prisoners. Compensation for such services will be governed by regulations of the State Board of Corrections.

The 1974 General Assembly provided for compensation to be awarded in the event of death, permanent injury, or injury materially reducing earning power, when sustained by an inmate or juvenile ward in the performance of work.

DIVISION OF GENERAL WELFARE

Conversion of three categories of public assistance to the new federally administered Supplemental Security Income program on January 1, 1974, probably represented the most significant change in Virginia's welfare system during the year 1973-74.

Former recipients of aid under the Old Age Assistance, Aid to the Permanently and Totally Disabled, and Aid to the Blind categories became beneficiaries of the new program administered by the U.S. Social Security Administration.

Another major change was the General Assembly action adopting

the Flat Allowance system of determining financial need of welfare clients. The new method, implemented on July 1, 1974, was expected to simplify the process and reduce the program's error rate.

Other legislation enacted in 1974 included the subsidized adoption program, whereby adoptive parents of children with special needs could receive assistance payments in a state-local cooperative effort; protective services for adults; and establishment of a support enforcement unit in the state agency in an attempt to require support from absent parents for children receiving assistance.

A manpower utilization unit was established in the division's central office, providing coordination of all work and training programs in localities in relation to their availability to recipients.

The Work Incentive (WIN) program was extended to the cities of Lynchburg and Martinsville and the counties of Henry, Madison, Montgomery and Pulaski, making a total of 19 localities participating in the program. In addition, the Job Orientation Motivation Demonstration project was extended.

Federal authorization was obtained for extending the Metropolitan Legal Aid Project until January 1, 1975.

There was an increase in referrals of children for health screening to detect the need for possible medical treatment under Medicaid.

It was required that family planning services be available to all recipients, where appropriate.

The Food Stamp Program was extended to 36 additional localities and planning was conducted for including six more localities early in the 1974-75 fiscal year, thus providing state-wide coverage of the program.

Licensing standards for Family Day Care Homes were revised.

The Department worked in cooperation with the State Department of Mental Health and Mental Retardation toward making the purchase of services a reality for the mentally retarded and developmentally disabled citizens of Virginia. The Department of Welfare has access to federal funds through Federal Social Security Act service programs and has amended the State Plan to provide for the Purchase of Services for the mentally retarded in the State. This provision has the potential for making badly needed resources available to mentally retarded persons who are in need of special services if they are to successfully return to and function in the community.

DIVISION OF YOUTH SERVICES

The central treatment facilities operated by the Division of Youth Services are in the midst of a major reorganization. This effort, being undertaken as a part of the Learning Environments Program, has as its major thrust the development and implementation of treatment programs based on the individual needs of children.

Development of the plan was completed in 1973-74. Included were name changes for the facilities to reflect the learning center concept, administrative reorganization, and staff training in specialized treatment units. Planning is underway and timetables have been developed to coeducate a number of the centers, develop more specialized cottage treatment units and upgrade staff skills for working with children in the specialized units.

The Learning Environments Program is an effort to provide a continuum of services for a small percentage of those children who come in contact with the juvenile justice system. This is not an entity unto itself but an effort to deliver services based on the needs of individuals. It must be viewed as a part of the total youth services system with all efforts being directed toward the goal of bringing together resources to meet the ever-changing needs of youth.

The Delinquency Prevention Service, which has as its goal the development of a network of youth service systems to carry out its mission of youth development and delinquency prevention, was active across the Commonwealth to encourage related program planning and development. Two formally organized Youth Service Systems offices were created in Hampton and Newport News. The prevention service expects to be able to accelerate the development of the youth service system concept as a consequence of a recent grant which will allow the placement of regional systems specialists in two of the Division's regional offices.

The Reception and Diagnostic Center made gains in expediting the intake and evaluation process, both by internal adjustments and by taking advantage of the steadily increasing capabilities of the community components. It also made considerable headway in instituting guidelines and procedures for the whole rapidly expanded special placements program.

The Mobile Psychiatric Clinic was able to achieve considerable improvement in the area of psychoeducational assessment and to add, perhaps as a first in the nation, the discipline of occupational therapy to the services it makes available to the Learning Centers.

On July 1, 1973, the Division of Youth Services began the develop-

ment of the State operated court service system. From that date until June 30, 1974, State court service units were developed in whole or in part to serve 20 of the state's 31 judicial districts. In addition, all of the work was completed during the fiscal year for the acceptance of 4 more locally operated units into the State systems on July 1, 1974. With this addition, approximately 62% of the population of the state will be served by State operated units.

A system for the administration of the State-operated court system and community youth homes and consultation to the locally operated system, detention homes and probation houses was developed during the year. This was accomplished through the establishment of six Youth Services Regional Offices throughout the state. All are staffed and in full operation.

Interstate Compact functions and operations were transferred from the Compact Administrator to the Supervisor of After Care Services during the year. It is anticipated that the Divisional Director will soon be appointed Compact Administrator and the Supervisor of After Care Services will continue to function as Deputy Administrator.

The Training Section, which provides direct training services and scholarship aid to employees of those agencies encompassed by the Division, now has 12 Training Specialists positions. During the 1973-1974 fiscal year, this group was responsible for the training of over 1200 juvenile corrections employees in 16 different job classifications at 39 separate agencies. The subject matter covered 14 separate areas, with the trainees amassing over 21,600 total hours. Approximately 250 individuals benefitted from the part-time scholarship aid, and 11 benefitted from the full-time scholarships.

PROBATION AND PAROLE BOARD

During the year, community correctional centers were opened in Richmond and Charlottesville for new parolees who lack homes or jobs; inmates about to be paroled in an effort to ease their adjustment back to free society; and not-so-recent parolees experiencing domestic, employment or other difficulty.

The centers provide concentrated casework for up to 90 days. Each center is staffed by a superintendent and lay counselors who reside at the facility. The capacity of the Richmond center is 24 while that at the Charlottesville center is 30.

Teams of probation and parole officers and vocational rehabilitation counselors began a surveillance and treatment program for per-

sons under supervision who have drug problems. The program operates under a contract between the Probation and Parole Board and the Virginia Department of Vocational Rehabilitation.

The job development program has branched out into additional areas of the state and now operates in Richmond, Roanoke, Northern Virginia, Tidewater, Danville and Charlottesville. The staff researches the area for available jobs in order that prospective parolees have job potentials in the community.

During the year, 1,536 persons were paroled, 1,098 were discharged from parole and 258 paroles were revoked.

TABLE I
Summary of Departmental Expenditures by Major Activity,
Source of Funds Expended and Sources of Institutional Earnings
 Year Ended June 30, 1974

FOR MAINTENANCE AND OPERATION	TOTAL EXPENDITURES	STATE GENERAL FUND	FEDERAL AND OTHER SPECIAL FUNDS	CENTRAL ACTIVITIES:	
				Administration of the Department	Corrections Activities
Administration of the Department	\$ 2,286,632	\$ 906,204	\$ 1,380,428	1,190,845	1,190,845
Corrections Activities	1,190,845	1,190,845	2,832,189	4,260,291	4,260,291
General Welfare Activities	154,655	154,655	554,123	571,663	571,663
Psychiatric-Clinical Services	571,663	571,663	686,583	2,790,032	2,790,032
Youth Services Activities	3,344,155	3,344,155	70,542	686,583	686,583
Virginia Probation and Parole Board	686,583	686,583	366,667	70,542	70,542
Board and Transportation of Delinquent Children	70,542	70,542	597,273	695,273	695,273
Dependents Court Ordered Payments	366,667	366,667	110,000	110,000	110,000
Children's Services	695,273	695,273	41,849	861,089	861,089
In Service Training for Welfare Personnel and	861,089	861,089	31,406	31,406	31,406
Scholarships	31,406	31,406	99,756,087	166,769,865	166,769,865
Home for Needy Confederate Women	166,769,865	166,769,865	2,578,962	2,578,962	2,578,962
Law Enforcement and Criminal Justice Programs	2,578,962	2,578,962	3,329,128	3,329,128	3,329,128
Other Activities	3,329,128	3,329,128	4,527,753	4,527,753	4,527,753
STATE AID TO COUNTIES/CITIES:	4,527,753	4,527,753	67,013,278	166,769,865	166,769,865
Public Assistance and Related Welfare Services	166,769,865	166,769,865	2,578,962	2,578,962	2,578,962
Detention Homes	2,578,962	2,578,962	3,329,128	3,329,128	3,329,128
Operation of Jails	3,329,128	3,329,128	4,527,753	4,527,753	4,527,753
Juvenile Probation and Juvenile Court Social Services--	4,527,753	4,527,753	26,541,348	26,541,348	26,541,348
District Courts	26,541,348	26,541,348	3,288,163	3,288,163	3,288,163
STATE ADULT CORRECTIONAL INSTITUTIONS:	3,288,163	3,288,163	23,253,185	23,253,185	23,253,185
Less Institutional Earnings	23,253,185	23,253,185	3,172,141	3,172,141	3,172,141
Net Cost of Operations	\$ 3,172,141	\$ 3,172,141	3,395,262	3,395,262	3,395,262
PENITENTIARY INDUSTRIAL DEPARTMENT OPERATIONS:	3,395,262	3,395,262	223,121	223,121	223,121
Less Receipts from Sales	223,121	223,121	8,040,065	8,040,065	8,040,065
Net Gain on Operations	\$ 8,040,065	\$ 8,040,065	7,042,974	7,042,974	7,042,974
STATE JUVENILE TRAINING SCHOOLS:	7,042,974	7,042,974	67,049	67,049	67,049
Less Institutional Earnings	67,049	67,049	7,973,016	7,973,016	7,973,016
Net Cost of Operations	\$ 7,973,016	\$ 7,973,016	118,567,770	118,567,770	118,567,770
GRAND TOTALS:	\$ 118,567,770	\$ 118,567,770	3,355,212	3,355,212	3,355,212
Expenses of Operation	3,355,212	3,355,212	115,212,558	115,212,558	115,212,558
Less Earnings	\$ 115,212,558	\$ 115,212,558	2,049,840	2,049,840	2,049,840
Net Cost of Operations	\$ 2,049,840	\$ 2,049,840	3,395,262	3,395,262	3,395,262
SOURCES OF INSTITUTIONAL EARNINGS:	3,395,262	3,395,262	743,275	743,275	743,275
Revenue from Inmate Labor	743,275	743,275	215,285	215,285	215,285
Receipts from Industrial Department Sales	215,285	215,285	212,524	212,524	212,524
Sale of Farm and Dairy Products	212,524	212,524	4,847	4,847	4,847
Sale of Meats to Employees and Others	4,847	4,847	56,780	56,780	56,780
Rental of Quarters	56,780	56,780	716,699	716,699	716,699
Receipts from Work Release Program	716,699	716,699	477,300	477,300	477,300
Revenue from Forestry Service	477,300	477,300	1,232,342	1,232,342	1,232,342
All Other Earnings	1,232,342	1,232,342	2,426,332	2,426,332	2,426,332
Total	\$ 2,426,332	\$ 2,426,332	TOTAL	TOTAL	TOTAL
CAPITAL OUTLAY EXPENDITURES:	TOTAL	TOTAL	TOTAL	TOTAL	TOTAL
Departmental Central Activities					
State Juvenile Training Schools					
State Adult Correctional Institutions					
TOTAL	\$ 2,426,332	\$ 2,426,332	TOTAL	TOTAL	TOTAL

TABLE II
CASES AND AVERAGE GRANTS

June 1955-June 1974

Year	Cases		Grant		AID TO DEPENDENT CHILDREN		MEDICAL ASSISTANCE FOR THE AGED (1)		GENERAL RELIEF				AUXILIARY GRANT PROGRAM (4)									
	Cases	Grant	Cases	Grant	Cases	Adults	Child- ren	Grant Per Case	Grant Per Person	Cases	Grant	Cases	Grant	Cases	Maintenance	CASES (2)	AGED		DISABLED			
																	Cases	Grant	Cases	Grant	Cases	Grant
																		Cases	Grant	Cases	Grant	
June 1955	49,179	17,211	30.14	...	8,844	7,798	26,481	\$ 65.26	\$16.84	...	4,679	\$ 38.86	3,918	\$ 38.46	2,641	\$ 35.86	11,886		
June 1956	48,863	16,567	31.13	...	8,960	7,866	27,179	67.31	17.21	...	4,981	39.80	4,150	38.28	2,130	35.02	12,075		
June 1957	48,788	16,098	34.26	...	8,857	7,730	27,311	72.44	18.31	...	5,486	42.09	4,486	40.61	2,007	34.95	11,854		
June 1958	50,404	15,544	36.59	...	9,154	7,947	28,751	74.73	18.64	...	5,607	42.39	4,877	41.02	2,414	37.39	12,808		
June 1959	50,449	15,195	41.12	...	9,279	8,030	29,262	82.48	20.52	...	6,085	47.03	5,147	40.89	2,111	40.25	12,632		
June 1960	51,565	14,529	44.31	...	9,478	8,082	29,933	84.18	20.99	...	6,305	49.88	5,318	41.53	2,100	42.79	13,835		
June 1961	53,575	14,459	55.05	...	10,357	9,070	32,961	98.15	24.19	...	6,641	61.94	5,773	43.40	2,115	45.69	14,230		
June 1962	53,889	14,084	56.10	...	10,704	9,390	34,283	99.12	24.29	...	6,553	62.09	6,065	44.46	2,183	47.60	14,300		
June 1963	54,232	13,505	60.81	...	10,480	10,264	33,956	101.02	23.94	...	6,445	66.45	6,203	46.98	2,045	45.32	15,554		
June 1964	57,706	13,413	62.61	1,197	10,593	10,386	34,597	102.42	24.12	...	6,732	66.64	6,613	47.27	2,059	45.54	17,099		
June 1965	63,876	13,135	67.24	3,549	10,805	10,496	35,505	107.58	25.27	...	6,909	71.01	6,743	47.21	2,027	49.68	20,708		
June 1966	66,147	12,723	73.39	5,591	11,118	10,834	36,529	111.94	26.28	...	6,930	77.60	7,399	50.11	2,165	53.95	20,221		
June 1967	66,708	12,396	79.71	3,921	12,814	12,467	41,748	127.86	30.22	...	7,214	81.88	7,673	55.59	2,341	52.23	20,349		
June 1968	69,689	12,524	89.22	3,634	14,659	13,962	46,772	135.03	32.59	...	7,419	90.44	7,589	59.81	2,838	56.03	21,026		
June 1969	75,613	13,011	131.87	4,352	32.73	17,752	16,458	54,794	166.75	41.54	...	7,695	126.87	7,933	75.09	3,865	61.32	21,005	
June 1970	94,727	13,767	91.41	66	75.19	25,774	24,926	74,644	166.43	43.03	...	7,998	86.80	7,681	76.79	4,403	76.80	35,038	
June 1971	127,316	16,411	119.89	...	35,347	33,923	96,343	176.12	47.79	...	10,050	102.17	7,000	80.60	5,673	84.87	52,835		
June 1972	150,370	18,100	136.64	...	43,647	41,858	113,940	171.77	47.95	805	234.44	12,336	107.96	6,736	94.36	6,437	89.86	63,075	
June 1973	160,996	13,727	76.42	...	47,564	44,996	118,471	168.17	48.93	37	176.82	12,806	97.28	6,318	113.60	6,307	98.45	74,240	
June 1974	169,281	50,674	45,662	118,920	173.37	53.38	43	218.58	6,160	125.76	6,743	102.91	100,181	2,894	53.08	2,586	42.35

(1) Medical Assistance for the Aged initiated January 1, 1964. Recipients covered under Title XIX, Medicaid-Only program beginning July, 1969.
 (2) Includes cases open for financial assistance that received no payment during the month.
 (3) Emergency Assistance to Needy Families With Children program implemented May 1972. 3 of the 37 cases receiving such assistance in June 1973, and 766 of the 805 cases receiving such assistance in June 1972 also received ADC money payments.
 (4) OAA and APTD recipients were converted to the Supplemental Security Income program January 1, 1974. The Auxiliary Grant Program is to supplement those recipients of assistance in December 1973 whose SSI payment is less than the December 1973 public assistance payments.

Division of General Welfare

TABLE III
Public Assistance: Cases Receiving Financial Assistance and Amount of Assistance by Program and Month
 Year Ended June 30, 1974

MONTH AND YEAR	ALL TYPES OF ASSISTANCE		OLD AGE ASSISTANCE (5)		AID TO THE PERMANENTLY AND TOTALLY DISABLED (5)		AUXILIARY GRANT PROGRAM (6)				AID TO DEPENDENT CHILDREN								FOSTER CARE		GENERAL RELIEF (1)		MEDICAL ASSISTANCE FOR THE AGED (4)		
	Total Cases Receiving Assistance	Total Amount of Assistance	Cases Receiving Assistance	Amount of Assistance	Cases Receiving Assistance	Amount of Assistance	Aged		Disabled		CASES RECEIVING ASSISTANCE			EMERGENCY ASSISTANCE TO NEEDY FAMILIES WITH CHILDREN (3)					Cases Receiving Assistance	Amount of Assistance	Cases Receiving Assistance	Amount of Assistance	Amount of Assistance		
							Cases	Amount of Assistance	Cases	Amount of Assistance	Families	Adults	Children	Amount of Assistance	ADC CASES		OTHER NEEDY FAMILIES								
															Cases	Amount	Families	Adults						Children	Amount
July 1973	86,464	\$11,716,895	13,708	\$ 1,052,100	12,806	\$ 1,249,039	47,474	44,916	117,913	\$ 8,027,642	1	\$ 220	31	52	85	\$ 4,150	6,119	\$ 702,034	6,326	\$ 681,710	\$
August	87,086	11,859,907	13,704	1,058,341	12,944	1,259,511	47,825	45,107	118,205	8,087,444	3	1,599	34	63	94	5,695	6,098	733,378	6,481	713,939
September	87,329	11,974,343	13,705	1,069,578	12,929	1,272,415	48,051	45,194	118,488	8,182,224	1	744	21	39	44	3,663	6,109	735,734	6,514	709,985
October	88,017	12,173,125	13,827	1,097,178	12,984	1,283,605	48,498	45,597	119,079	8,292,816	2	649	31	56	85	4,534	6,088	775,121	6,589	719,222
November	88,281	12,235,947	13,915	1,135,865	13,039	1,318,042	48,593	45,563	118,911	8,287,466	12	3,099	28	50	57	5,053	6,045	758,995	6,661	727,427
December	88,697	12,389,618	13,973	1,141,647	13,326	1,364,246	48,876	45,694	118,924	8,383,513	12	4,373	34	61	99	7,925	6,011	773,611	6,477	714,303
January 1974	69,255	10,276,329	3,770	\$ 198,372	3,556	\$ 167,648	49,242	45,739	119,261	8,430,878	12	3,636	83	141	199	17,054	6,236	755,504	6,368	703,237
February	69,018	10,334,274	3,377	184,013	2,987	137,449	49,788	45,762	119,540	8,511,558	11	2,961	76	128	161	14,894	6,248	761,188	6,542	722,211
March	69,155	10,562,363	3,256	177,483	2,776	125,213	50,275	46,129	120,451	8,703,649	12	2,694	97	152	201	20,345	6,176	798,523	6,575	734,456
April	69,008	10,509,069	3,080	167,707	2,733	122,107	50,550	46,066	119,906	8,671,498	2	842	69	105	163	12,648	6,016	791,469	6,560	742,798
May	69,285	10,824,000	3,033	163,998	2,663	117,635	50,866	46,085	119,865	8,899,755	6	3,163	70	108	140	11,067	6,215	884,174	6,438	744,208
June	68,736	10,534,868	2,894	153,628	2,586	109,514	50,674	45,662	118,920	8,785,177	43	89	99	9,399	8,160	755,699	6,379	721,451
Year Ending June 30, 1974	135,390,738 (2)	\$ 6,554,709 (2)	\$ 7,746,858 (2)	\$ 1,045,201 (2)	\$ 779,566 (2)	101,263,620 (2)	23,980 (2)	\$ 116,427 (2)	\$ 9,225,430 (2)	\$ 8,634,947 (2)	\$ (2)
Year Ending June 30, 1973	141,498,067	12,509,755	14,071,691	94,146,770	4,242,574	8,019,743	8,282,697	8,282,697
Year Ending June 30, 1972	139,760,443	26,566,026	14,315,385	83,973,169	185,852	7,023,122	7,681,719	7,681,719
Year Ending June 30, 1971	112,548,209	20,884,657	10,794,050	67,140,417	7,131,316	6,597,769	6,597,769
Year Ending June 30, 1970	78,427,760	12,854,863	7,725,370	45,018,376	7,195,959	5,086,074	5,086,074	\$ 547,118

(1) General Relief cases represent unduplicated count excluding cases open in other programs that were supplemented from General Relief Funds. Amount of assistance includes supplementary payments. (4) Medical Assistance for the Aged program discontinued during fiscal year 1970 due to implementation of the Title XIX, Medicaid Program.

(2) Exemptions and refunds deducted from totals shown in Table have not been deducted from the amount of Assistance for the several programs shown in this table. (5) Payments made to Intermediate Care Facilities on behalf of OAA and APTD recipients became part of the Title XIX, Medicaid Program January 1, 1972. The reporting of such payments and recipients was continued by this department through June 1972. The data shown in these categories for this year reflects only money payment recipients and amount of such payments.

(3) Emergency Assistance to Needy Families with Children program implemented in May, 1972. Emergency Assistance-ADC Cases are payments made for cases and recipients receiving money payments, therefore the amount of cases is duplicated and is not included in the total cases receiving assistance column. Emergency Assistance-Other Needy Families are payments made for needy families with children who are not receiving maintenance assistance. (6) OAA and APTD recipients were converted to the Supplemental security Income Program January 1, 1974. The Auxiliary Grant Program is to supplement those recipients of assistance in December 1973 whose SSI payment is less than the December 1973 public assistance payment.

TABLE IV
Expenditures for Public Assistance and Hospitalization
of the Indigent According to Counties and Cities

Year Ended June 30, 1974

COUNTIES	AID TO BLIND	OLD AGE ASSISTANCE	AUXILIARY GRANTS AGED	AID TO DEPENDENT CHILDREN	AID TO PERMANENTLY AND TOTALLY DISABLED	AUXILIARY GRANTS DISABLED	GENERAL RELIEF	FOSTER CARE	NON-MATCHING ASSISTANCE	DAY CARE OTHER PURCHASED SERVICES AND WIN SCREENING	ADMINISTRATION	TOTAL PUBLIC ASSISTANCE	APPORTIONMENT OF FUNDS BASED UPON ACTUAL REIMBURSEMENT			STATE AND LOCAL HOSPITALIZATION
													FEDERAL	STATE	LOCAL	
Accomack	10,673	90,758	7,533	963,760	68,288	2,597	62,583	17,672		19,226	279,174	1,522,264	880,052	545,246	96,966	50,813
Albemarle	3,833	52,013	4,155	660,265	56,645	6,894	66,260	36,334		26,936	303,911	1,217,246	661,754	442,227	113,265	
Alleghany	1,910	11,922	1,028	91,378	19,447	1,587	8,997	24,999		2,475	86,596	250,339	121,648	92,347	36,344	3,536
Amelia	1,568	10,247	238	55,561	13,000	356	762	9,979		1,089	56,544	149,344	77,015	55,487	16,842	
Amherst	509	13,567	238	116,816	14,283	2	12,008	17,105		501	48,029	223,058	118,593	81,260	23,205	3,478
Appomattox	3,108	24,410	2,591	82,267	18,970	1,798	3,849	4,099		2,954	65,243	209,289	120,170	68,845	20,274	5,274
Arlington	14,559	101,575	23,626	1,956,336	113,105	23,484	321,395	487,306		324,718	1,505,298	4,871,402	2,319,591	1,490,987	1,060,824	171,714
Augusta	2,153	52,218	7,738	320,113	43,640	1,252	40,557	97,026		11,070	182,704	758,471	377,150	276,192	105,129	17,975
Bath	348	8,656	338	15,534	3,163		11,586	13,011			40,541	93,177	40,423	32,709	20,045	
Bedford	4,507	20,797	1,515	245,950	19,314	310	1,747	16,941		4,611	130,924	446,616	254,316	152,834	39,466	1,937
Bland	108	8,984	563	29,074	3,651		777				32,956	76,113	45,467	23,552	7,094	662
Botetourt	2,744	30,134	5,065	234,169	35,176	985	18,372	11,804		7,197	99,953	445,599	251,490	157,199	36,910	6,057
Brunswick	3,409	26,799	1,306	156,382	20,728	1,364	360	1,332		2,113	105,328	319,121	177,300	117,215	24,606	874
Buchanan	9,195	47,405	566	869,474	76,699	1,383	8,510	12,490		2,733	285,915	1,314,370	790,369	451,845	72,156	13,285
Buckingham	2,704	9,393	450	173,719	9,439		366	4,147		5,113	67,094	272,425	163,791	92,019	16,615	
Campbell	4,267	32,553	3,195	369,434	29,038	1,534	14,519	35,867		11,652	158,285	660,344	359,993	239,819	60,532	2,298
Caroline	1,735	14,973	1,259	112,105	16,435	1,059	3,611	21,597		1,302	102,591	276,667	146,462	96,270	33,935	5,253
Carroll	4,521	43,925	989	155,171	32,084	909	11,587	5,805		4,175	136,238	395,404	222,091	137,350	35,963	7,986
Charles City	1,586	7,010	973	203,863	7,998	452	6,428	6,428		466	60,277	289,053	165,612	107,590	15,851	
Charlotte	188	16,443	720	171,989	13,893	256	832	7,437		1,409	76,737	289,904	170,438	99,398	20,068	5,187
Chesterfield	5,638	22,793	2,642	448,715	43,695	4,566	1,636	144,356		28,642	371,324	1,074,007	567,052	353,094	153,871	273
Clarke	3,611	8,064	1,164	79,880	11,580	703	6,425	9,310		3,812	63,582	188,131	102,208	64,533	21,390	631
Craig	408	2,143		3,205	2,647		216	4,915			19,550	33,084	16,341	9,335	7,408	1,382
Culpeper	1,506	26,643	5,403	286,128	21,856	2,537	10,849	24,504		3,571	137,010	520,007	282,136	188,438	49,433	4,552
Cumberland	1,670	12,029	244	186,029	17,342	40	3,034	7,830		1,043	58,382	287,643	167,494	100,809	19,340	664
Dickenson	2,606	57,556	1,691	560,669	60,930	791	2,276	4,362		690	273,278	964,849	552,598	351,180	61,071	3,997
Dinwiddie	3,158	19,027	1,602	214,946	27,553	754	4,294	22,742	149	5,213	96,793	396,231	217,725	144,062	34,444	3,957
Essex	835	6,487	196	53,357	4,558	141	1	14,194		62	48,283	128,109	67,483	43,702	16,924	649
Fairfax	8,003	102,311	30,409	4,422,781	132,017	35,679	584,438	1,000,596	14,464	668,287	1,663,815	8,662,800	3,775,851	2,729,515	2,157,434	355,686
Fauquier	1,750	22,590	1,670	135,299	10,654		7,347	40,311		835	102,041	322,497	160,274	118,180	44,043	12,565
Floyd	460	19,713	606	37,072	11,620	148	857	1,632		650	43,697	116,455	68,301	37,961	10,193	
Fluvanna	2,525	12,410	211	128,820	10,022	476	3,325	4,241		2,377	46,440	210,847	123,495	72,796	14,556	
Franklin	2,097	30,395	1,707	154,306	40,337	562	769	7,491			83,487	321,151	188,530	108,553	24,068	821
Frederick	654	16,468	489	125,390	21,066	1,723	3,574	37,721		4,034	108,691	319,810	161,673	113,221	44,916	8,661
Giles	3,229	30,881	565	232,914	40,721	1,712	9,601	43,922		2,049	181,095	546,689	279,074	203,300	64,315	7,722
Gloucester	5,811	22,458	3,748	283,645	21,539	270	21,723	14,049		6,274	120,144	499,661	270,944	186,021	42,696	1,817
Goochland	2,415	14,629	1,040	174,828	15,427	921	10,889	18,585		9,918	81,450	330,102	180,532	117,372	32,198	
Grayson	1,761	38,303	1,332	177,237	22,013	1,460	5,432	3,260		7,774	130,620	389,192	220,642	136,476	32,072	5,754
Greene	1,062	10,755	224	114,154	9,812	164	1,618	11,512		6,866	50,393	206,560	116,901	70,221	19,438	1,283
Greensville	2,444	16,757	662	272,142	15,611	728	3,752	27,810		1,500	123,510	464,916	264,692	159,226	40,998	911
Halifax	6,787	67,338	3,144	634,942	79,106	3,802	14,130	26,116		11,492	301,628	1,148,485	644,321	417,297	86,867	10,890
Hanover	2,577	21,343	1,394	176,218	24,141	794	8,372	34,194		7,075	127,786	403,894	220,347	136,278	47,269	
Henrico	6,245	29,132	3,956	284,351	36,937	2,013	29,472	161,596		11,446	448,983	1,014,131	478,468	347,276	188,387	2,236
Henry	3,183	34,621	4,234	469,138	34,785	2,940	17,689	67,370		21,737	318,036	973,733	527,447	332,704	113,582	16,867
Highland	1,012	2,590		5,111	2,262		347	2,880			18,506	32,708	17,307	10,129	5,272	213
Iste of Wight	1,110	25,954	2,247	275,675	26,526	3,088	5,380	33,642		155	121,975	495,752	261,399	189,058	45,295	280
James City	1,658	12,561	2,109	502,099	25,069	1,162	11,631	17,898		35,335	198,366	807,888	466,393	283,032	58,463	782
King George	911	8,304	321	125,965	8,425	238	2,940	11,438		8,717	71,504	238,763	133,251	82,347	23,165	3,643
King and Queen	948	10,197	720	104,785	7,399	298	2,910	5,238		1,560	34,391	168,446	97,515	59,805	11,126	
King William	1,762	6,730	727	68,589	2,324		442	228			33,095	113,897	68,694	38,032	7,171	
Lancaster	1,831	22,213	3,442	190,540	15,264	343	5,070	6,798		8,655	87,162	341,318	194,981	121,286	25,051	1,360
Lee	5,680	82,897	4,595	569,767	92,893	3,358	12,150	17,726		2,113	308,108	1,099,287	615,710	402,875	80,702	7,591
Loudoun	2,273	18,724	1,160	407,990	18,142	283	31,785	53,997		56,293	277,949	868,596	472,627	291,936	104,033	16,903
Louisa	5,110	28,195	1,624	190,818	19,241	672	6,144	26,215		1,430	111,160	390,609	218,800	133,065	38,744	4,919
Lunenburg		17,922	632	105,630	14,472	246	584	19,994			48,266	207,746	113,652	73,896	20,198	979

TABLE IV—Continued
Expenditures for Public Assistance and Hospitalization
of the Indigent According to Counties and Cities

Year Ended June 30, 1974

Main data table with columns: COUNTIES, AID TO BLIND, OLD AGE ASSISTANCE, AUXILIARY GRANTS AGED, AID TO DEPENDENT CHILDREN, AID TO PERMANENTLY AND TOTALLY DISABLED, AUXILIARY GRANTS DISABLED, GENERAL RELIEF, FOSTER CARE, NON-MATCHING ASSISTANCE, DAY CARE OTHER PURCHASED SERVICES AND WIN SCREENING, ADMINISTRATION, TOTAL PUBLIC ASSISTANCE, APPOINTMENT OF FUNDS BASED UPON ACTUAL REIMBURSEMENT (FEDERAL, STATE, LOCAL), STATE AND LOCAL HOSPITALIZATION.

nth

TH CHILDREN (3)

OTHER NEE

Summary table with columns: Adults, Ch. Rows: 52, 63, 39, 56, 50, 61, 141, 128, 152, 105, 108, 89.

to implementati

ents became part

rogram January 1

TABLE IV—Continued
Expenditures for Public Assistance and Hospitalization
of the Indigent According to Counties and Cities

Year Ended June 30, 1973

CITIES	AID TO BLIND	OLD AGE ASSISTANCE	AUXILIARY GRANTS AGED	AID TO DEPENDENT CHILDREN	AID TO PERMANENTLY AND TOTALLY DISABLED	AUXILIARY GRANTS DISABLED	GENERAL RELIEF	FOSTER CARE	NON-MATCHING ASSISTANCE	DAY CARE, OTHER PURCHASED SERVICES AND WIN SCREENING	ADMINISTRATION	TOTAL PUBLIC ASSISTANCE	APPORTIONMENT OF FUNDS BASED UPON ACTUAL REIMBURSEMENT			STATE AND LOCAL HOSPITALIZATION
													Federal	State	Local	
Falls Church	196	1,440	302	59,726	1,253	295	12,520	13,188	9,727	98,647	38,678	34,765	25,204	991
Franklin	1,690	19,066	2,539	284,958	26,376	906	1,426	14,881	4,493	91,850	448,185	256,420	163,570	28,195
Fredericksburg	6,271	26,633	4,413	268,450	21,612	1,385	12,549	30,993	13,391	137,055	522,752	288,761	182,457	51,534	7,189
Galax	1,668	6,459	91,679	10,989	714	2,507	1,452	2,550	39,262	157,280	88,674	57,782	10,824	272
Hampton	17,753	117,940	30,688	3,829,481	147,460	19,404	255,693	100,559	579,967	1,281,450	6,380,395	3,775,344	2,111,785	493,266	80,374
Harrisonburg	1,229	17,503	3,100	103,977	19,159	1,353	1,597	23,694	19,107	109,596	300,315	163,413	97,787	39,115	1,057
Hopewell	3,528	25,267	3,296	442,811	33,910	3,440	16,015	37,676	58,495	144,561	768,999	434,003	272,514	62,482	5,152
Lexington	2,295	14,874	741	95,285	7,484	6	2,115	5,678	301	128,788	74,071	50,768	3,949	1,259
Lynchburg	14,335	75,807	8,733	1,043,228	87,613	3,259	13,162	121,016	67,308	608,753	2,043,214	1,152,843	692,360	198,011	63,125
Martinsville	1,443	31,600	7,902	382,666	43,531	3,917	19,629	49,726	118,181	176,220	834,815	467,669	283,427	83,719	1,141
Newport News	33,449	178,325	38,965	4,678,084	201,549	20,201	352,331	182,797	418,789	1,440,893	7,545,383	4,280,920	2,679,406	584,977	230,225
Norfolk	123,634	747,050	166,045	17,345,262	688,060	88,295	2,327,089	480,405	1,231,726	4,914,098	28,111,664	15,404,927	10,287,082	2,419,655	628,518
Norton	696	9,002	584	88,278	12,161	254	233	4,516	20	65,084	180,828	104,019	60,504	16,305
Petersburg	30,124	171,993	43,070	2,708,513	194,486	25,661	3,660	47,703	254,663	730,851	4,210,664	2,513,908	1,466,562	230,194	42,407
Portsmouth	32,854	316,563	68,514	6,947,329	516,369	41,304	309,969	163,352	285,774	1,791,424	10,473,452	6,004,301	3,774,196	694,955	256,963
Radford	10,492	704	41,220	6,278	326	5,542	19,263	10,382	54,585	148,792	71,807	52,934	24,051	5,444
Richmond	206,413	1,031,101	258,144	17,815,506	1,628,559	213,791	2,689,131	1,589,840	1,987,635	7,191,672	34,611,792	18,355,877	12,353,654	3,902,261	818,029
Roanoke	26,147	232,601	30,235	3,827,853	371,301	29,450	277,189	545,974	360,184	1,147,802	6,848,736	3,730,998	2,437,539	680,199	117,398
South Boston	2,457
Staunton	2,183	42,892	8,816	209,057	25,390	3,356	21,750	43,518	13,232	135,563	505,757	264,397	177,942	63,418	9,543
Suffolk	21,316	100,811	12,379	1,796,057	136,122	9,396	13,291	36,794	73,085	509,847	2,709,098	1,631,288	934,672	143,138	53,180
Virginia Beach	15,184	80,424	11,313	2,465,461	125,931	16,737	40,062	336,184	135,303	1,456,564	4,683,163	2,602,701	1,573,405	507,057	83,671
Waynesboro	922	10,397	2,335	119,204	12,120	1,210	21,801	22,841	24,582	101,084	316,496	167,936	104,794	43,766	6,936
Williamsburg	1,546	3,123	120	54,515	5,763	182	4,405	5,552	5,529	45,561	126,296	70,215	41,642	14,439
Winchester	1,100	27,887	2,830	272,784	34,611	2,228	9,510	28,798	12,999	120,306	513,053	282,512	184,802	45,739	7,892
TOTAL CITIES	607,658	3,710,758	766,869	71,791,546	4,833,435	530,398	6,346,116	4,573,382	4,698	6,197,030	25,867,301	125,729,191	69,364,574	44,669,453	11,695,164	2,740,015
TOTAL COUNTIES	299,172	2,792,875	266,436	29,443,002	2,805,123	193,202	1,821,806	3,745,716	14,681	1,701,016	16,518,795	59,601,824	31,435,497	20,485,379	7,680,948	957,456
GRAND TOTAL	906,830	6,503,633	1,033,305	101,234,548	7,638,558	723,600	8,667,922	8,319,098	19,379	7,898,046	42,386,096	185,331,015	100,800,071	65,154,832	19,376,112	3,697,471
Source of Funds																
F.S.L.	7,898,046	41,942,509	49,840,555
F.S.	830,628	6,494,357	99,747,474	7,628,978	114,701,437
S.L.	76,202	1,033,305	141,826	723,600	8,578,772	8,319,098	18,872,803	3,697,471
Local Only	9,276	1,345,248	9,580	19,379	437,929	1,821,412
Federal Only	89,150	5,658	94,808
Total Funds	906,830	6,503,633	1,033,305	101,234,548	7,638,558	723,600	8,667,922	8,319,098	19,379	7,898,046	42,386,096	185,331,015	100,800,071	19,376,112	3,697,471	
Apportionment of Funds:																
Based on Federal Partic-																
ipation																
Federal	482,090	3,999,290	61,236,696	4,697,283	(4)	89,150	6,093,723	24,050,413	100,648,645
State	377,047	2,496,257	636,205	38,583,513	2,931,876	447,352	5,204,652	4,159,549	897,950	9,571,857	65,306,258	1,848,736
Local	47,693	8,086	397,100	1,414,339	9,399	276,248	3,374,120	4,159,549	19,379	906,373	8,763,826	19,376,112	1,848,735
Total Funds	906,830	6,503,633	1,033,305	101,234,548	7,638,558	723,600	8,667,922	8,319,098	19,379	7,898,046	42,386,096	185,331,015	100,800,071	65,154,832	19,376,112	3,697,471

- (1) Furnished by the Virginia Commission for the Visually Handicapped.
- (2) The total expenditures includes funds in the amount of \$272,684, which have been reimbursed by the Commission of the Visually Handicapped applicable to the Aid to the Blind program.
- (3) The difference between the amount shown as federal and state reimbursement to localities and the apportionment of funds based on federal participation represents: (a) fractional differences in computations, and (b) federal funds made available for the administration of the food stamp program which is not included in the reimbursable amount as federal funds.
- (4) Federal Assistance to Cuban Refugees is shown under the category of General Relief expenditures. This program is financed by Federal funds.
- (5) Expenditures were made for the following purposes:

	Total	State Share
For Hospitalization of the Indigent and the Medically Indigent	\$3,220,688	\$1,610,344
For Out Patient and Emergency Room Services	476,783	238,392
Grand Totals	\$3,697,471	\$1,848,736

—Continued

Assistance and Hospitalization
to Counties and Cities

June 30, 1973

NON-MATCHING ASSISTANCE	DAY CARE, OTHER PURCHASED SERVICES AND WIN SCREENING	ADMINISTRATION	TOTAL PUBLIC ASSISTANCE	APPORTIONMENT OF FUNDS BASED UPON ACTUAL REIMBURSEMENT			STATE AND LOCAL HOSPITALIZATION
				Federal	State	Local	
.....	9,727	98,647	38,678	34,765	25,204	991
.....	4,493	91,850	448,185	256,420	163,570	28,195
.....	13,391	137,055	522,752	288,761	182,457	51,534	7,189
.....	2,550	39,262	157,280	88,674	57,782	10,824	272
.....	579,967	1,281,450	6,380,395	3,775,344	2,111,785	493,266	80,374
.....	19,107	109,596	300,315	163,413	97,787	39,115	1,057
.....	58,495	144,561	768,999	434,003	272,514	62,482	5,152
.....	301	128,788	74,071	50,768	3,949	1,259
.....	67,308	608,753	2,043,214	1,152,843	692,360	198,011	63,125
.....	118,181	176,220	834,815	467,669	283,427	83,719	1,141
.....	418,789	1,440,893	7,545,383	4,280,920	2,679,486	584,977	230,225
.....	1,231,726	4,914,098	28,111,664	15,404,927	10,287,082	2,419,655	628,518
.....	20	65,084	180,828	104,019	60,504	16,305
.....	254,603	730,851	4,210,664	2,513,908	1,466,562	230,194	42,407
.....	285,774	1,791,424	10,473,452	6,004,301	3,774,196	694,955	256,963
.....	10,382	54,585	148,792	71,807	52,934	24,051	5,444
.....	1,987,635	7,191,672	34,611,792	18,355,877	12,353,654	3,902,261	818,029
.....	360,184	1,147,802	6,848,736	3,730,998	2,437,539	680,199	117,398
.....	2,457
.....	13,232	135,563	505,757	264,397	177,942	63,418	9,543
.....	73,085	509,847	2,709,098	1,631,288	934,672	143,138	53,180
.....	135,303	1,456,564	4,683,163	2,602,701	1,573,405	507,057	83,671
.....	24,582	101,084	316,496	167,936	104,794	43,766	6,936
.....	5,529	45,561	126,296	70,215	41,642	14,439
.....	12,999	120,306	513,053	282,512	184,802	45,739	7,892
4,698	6,197,030	25,867,301	125,729,191	69,364,574	44,669,453	11,695,164	2,740,015
14,681	1,701,016	16,518,795	59,601,824	31,435,497	20,485,379	7,680,948	957,456
19,379	7,898,046	42,386,096	185,331,015	100,800,071	65,154,832	19,376,112	3,697,471
.....	7,898,046	41,942,509	49,840,555
114,701,437	18,872,803
19,379	437,929	1,821,412	3,697,471
.....	5,658	94,808
19,379	7,898,046	42,386,096	185,331,015	100,800,071	65,154,832	19,376,112	3,697,471
.....	6,093,723	24,050,413	100,648,645
.....	897,950	9,571,857	65,306,258	1,848,736
19,379	906,373	8,763,826	19,376,112	1,848,735
19,379	7,898,046	42,386,096	185,331,015	100,800,071	65,154,832	19,376,112	3,697,471

licable to the Aid to the Blind program.
icipation represents: (a) fractional differences in computations.
l funds.

Division of General Welfare

TABLE V
Hospitalization Under the State and Local Program
for the Indigent
Year Ended June 30, 1974

	TOTAL
INPATIENT CARE:	
Number of admissions	5,091
Total hospital days paid from public funds	46,079
Average days paid from public funds per admission	9.1
Average per diem cost from public funds	\$ 71.13
Average cost per admission from public funds	\$ 643.81
Number of white patients	2,234
Number of nonwhite patients	2,412
Race not reported	445
Number of male patients	2,114
Number of female patients	2,971
Sex not reported	6
OUTPATIENT HOSPITAL CLINIC AND EMERGENCY ROOM VISITS:	
Number of visits	58,501
Total Expenditures (Matched funds only)	\$ 476,784
PAYMENTS FROM PUBLIC FUNDS—TOTAL	
State	\$ 3,754,420*
Local	\$ 1,877,210
.....	\$ 1,877,210

*Refunds made after bills are paid have not been deducted from this data. Includes both inpatient care and outpatient hospital clinic and emergency room care. Does not include local non-matched funds amounting to \$68,864 for inpatient care and \$271,876 for outpatient hospital clinic and emergency room visits.

Division of General Welfare

TABLE VI
Child Welfare Services Provided by
Local Departments of Public Welfare

July 1, 1973—June 30, 1974

SERVICES OPEN DURING THE YEAR	
TYPE OF SERVICE	NUMBER OF CHILDREN OPEN FOR SERVICE
Agency placement for adoption	1,356
Adoption study or supervision only	5,099
Foster placement (exclusive of adoption placement and children supervised for State Department of Welfare	14,346
Pre-hearing study for Courts	2,834
Probation supervision	963
Supervision for State Department of Welfare	294
Child protective services	10,101
Services to unmarried mothers	173
Homemaker Services	41
Day Care	271
Health Care and Medical Services	2,599
Education and Training Services	1,387
Other	5,918
TOTAL number of services open	45,382*

*Some children were open for more than one type of service; 36,787 children were open for service during the year.

LOCATION OF CHILDREN UNDER CARE ON
JUNE 30, 1974

LOCATION	NUMBER OF CHILDREN
Adoptive home	3,669
Foster family home (placed by an agency)	9,382
Group home	241
Parent's home	6,593
Other relative's home (not placed by an agency)	277
Non-relative's home (not placed by an agency)	87
Child welfare institutions	546
Maternity homes for unmarried mothers	26
All other institutions	589
Independent living arrangements	139
Elsewhere	670
TOTAL children under care	22,219

Division of Youth Services

TABLE VII
Children Under Care of the Division of Youth Services

July 1, 1973—June 30, 1974

DIVISION OF YOUTH SERVICES—SUMMARY	
In Care, July 1, 1973	1,383
Newly Committed during year	1,123
Returned from Placement	218
Returned from AWOL	323
Otherwise Received during year	378
Total under Care during year	3,425
Returned to Local Supervision	1,025
Discharged without Supervision	146
AWOL	415
Otherwise Released	502
In Care, June 30, 1974	1,337
DIAGNOSTIC CENTER—STUDY UNIT	
In Care, July 1, 1973	175
Newly Committed	1,123
Returned from placement	218
Transferred from training schools	126
Transferred from Pinecrest	1
Transferred from Forestry Camp	5
Transferred from Cedar Lodge	2
Transferred from Boarding Care	71
Transferred from Community Youth Homes	8
Returned from AWOL	86
Otherwise received	55
Total under care during year	1,870
Returned to local supervision	57
Transferred to training schools	1,026
Transferred to Pinecrest	30
Transferred to Forestry Camp	123
Transferred to Juvenile Vocational Institute	22
Transferred to Cedar Lodge	3
Transferred to Boarding Care	184
Transferred to Community Youth Homes	29
Discharged without supervision	29
AWOL	86
Otherwise Released	89
In Care, June 1974	192
DIAGNOSTIC CENTER—BOARDING CARE	
In Care, July 1, 1973	265
Transferred from Study	184
Transferred from training schools	98
Transferred from Roanoke Child Care Bureau	0
Transferred from Pinecrest	2
Transferred from Community Youth Homes	1
Returned from AWOL	39
Otherwise received	60
Total in care during year	649
Returned to local supervision	94
Transferred to Diagnostic Center	71
Transferred to training schools	43
Transferred to Juvenile Vocational Institute	1
Transferred to Community Youth Homes	2
Transferred to Roanoke Child Care Bureau	0
Discharged without supervision	49
AWOL	51
Otherwise released	79
In Care, June 30, 1974	259
BON AIR SCHOOL FOR GIRLS	
In Care, July 1, 1973	159
Transferred from Study	234

TABLE VII—Continued

Transferred from Janie P. Barrett	4
Transferred from Boarding Care	1
Returned from AWOL	52
Otherwise Received	22
Total in school during year	472
Returned to local supervision	109
Transferred to Diagnostic Center	39
Transferred to Janie P. Barrett	5
Transferred to Roanoke Community Youth Home	3
Transferred to Ladies Mile Manor	5
Transferred to Boarding Care	8
Discharged without supervision	16
AWOL	77
Otherwise released	57
In Care, June 30, 1974	153
BEAUMONT SCHOOL FOR BOYS	
In Care, July 1, 1973	252
Transferred from Study	428
Transferred from Hanover School for Boys	8
Transferred from Natural Bridge Forestry Camp	3
Transferred from Hampton Place	2
Transferred from Staunton Community Youth Home	3
Transferred from Exodus House	2
Transferred from Cedar Lodge	4
Transferred from Boarding Care	8
Transferred from training schools	2
Returned from AWOL	41
Otherwise received	90
Total in school during year	843
Returned to local supervision	274
Transferred to Diagnostic Center	70
Transferred to Hampton Place	9
Transferred to Staunton Community Youth Home	11
Transferred to Exodus House	6
Transferred to Roanoke Community Youth Home	5
Transferred to Juvenile Vocational Institute	11
Transferred to Boarding Care	7
Discharged without supervision	17
AWOL	57
Otherwise released	119
In Care, June 30, 1974	257
JANIE P. BARRETT	
In Care, July 1, 1973	88
Transferred from Study	138
Transferred from Bon Air	3
Transferred from Training Schools	2
Returned from AWOL	39
Otherwise Received	16
Total in school during year	286
Returned to local supervision	93
Transferred to Diagnostic Center	32
Transferred to Bon Air	4
Transferred to Boarding Care	5
Discharged without supervision	2
AWOL	46
Otherwise released	17
In Care, June 30, 1974	87
HANOVER SCHOOL FOR BOYS	
In Care, July 1, 1973	229
Transferred from Study	258
Transferred from Cedar Lodge	3
Transferred from Boarding Care	5
Transferred from Training Schools	1
Returned from AWOL	34
Otherwise received	60

TABLE VII—Continued

Total in school during year	590
Returned to local supervision	238
Transferred to Diagnostic Center	57
Transferred to Beaumont	9
Transferred to Juvenile Vocational Institute	1
Transferred to Boarding Care	2
Discharged without supervision	2
AWOL	42
Otherwise released	71
In Care, June 30, 1974	168
PINECREST CENTER	
In Care, July 1, 1973	32
Transferred from Study	30
Returned from AWOL	2
Otherwise received	24
Total in school during year	88
Returned to local supervision	23
Transferred to Diagnostic Center	1
Transferred to Boarding Care	2
AWOL	4
Otherwise released	26
In Care, June 30, 1974	32
NATURAL BRIDGE FORESTRY CAMP	
In Care, July 1, 1973	92
Transferred from Study	122
Otherwise received	19
Total in school during year	233
Returned to local supervision	101
Transferred to Diagnostic Center	5
Transferred to Beaumont	2
Transferred to Hampton Place	1
Transferred to Staunton Community Youth Home	2
Transferred to Exodus House	1
Discharged without supervision	7
AWOL	1
Otherwise released	22
In Care, June 30, 1974	91
NORFOLK COMMUNITY YOUTH HOME—"HAMPTON PLACE"	
In Care, July 1, 1973	7
Transferred from Study	2
Transferred from Beaumont	14
Transferred from Forestry Camp	1
Returned from AWOL	3
Otherwise received	2
Total in home during year	29
Returned to local supervision	5
Transferred to Diagnostic Center	3
Transferred to Beaumont	2
Discharged without supervision	4
AWOL	5
Otherwise Released	1
In Care, June 30, 1974	9
RICHMOND COMMUNITY YOUTH HOME—"EXODUS HOUSE"	
In Care, July 1, 1973	9
Transferred from Study	3
Transferred from Beaumont	8
Transferred from Forestry Camp	2
Transferred from Cedar Lodge	2
Returned from AWOL	7
Otherwise Received	1
Total in home during year	32
Returned to local supervision	1
Transferred to Diagnostic Center	3
Transferred to Beaumont	1

TABLE VII—Continued

Discharged without supervision	6
AWOL	12
Otherwise released	1
In care, June 30, 1974	8
RICHMOND COMMUNITY YOUTH HOME—"LADIES MILE MANOR"	
In Care, July 1, 1973	6
Transferred from Study	5
Transferred from Bon Air	6
Return from AWOL	6
Otherwise received	6
Total in home during year	29
Transferred to Diagnostic Center	3
Discharged without supervision	4
AWOL	9
Otherwise released	3
In Care, June 30, 1974	10
ROANOKE COMMUNITY YOUTH HOME	
In Care, July 1, 1973	6
Transferred from Study	8
Transferred from Bon Air	3
Transferred from Beaumont	3
Returned from AWOL	1
Otherwise received	1
Total in home during year	22
Returned to local supervision	2
Transferred to Diagnostic Center	3
Transferred to Beaumont	2
Discharged without supervision	4
AWOL	4
Otherwise released	1
In Care, June 30, 1974	6
STAUNTON COMMUNITY YOUTH HOME	
In Care, July 1, 1973	0
Transferred from Study	5
Transferred from Beaumont	8
Transferred from Forestry Camp	2
Returned from AWOL	2
Total in home during year	17
Transferred to Diagnostic Center	1
Transferred to Juvenile Vocational Institute	1
Transferred to Boarding Care	1
Discharged without supervision	1
AWOL	6
Otherwise released	0
In Care, June 30, 1974	7
JUVENILE VOCATIONAL INSTITUTE	
In Care, July 1, 1973	46
Transferred from Study	20
Transferred from Beaumont	10
Transferred from Hanover	1
Transferred from Staunton Community Youth Home	1
Transferred from Roanoke Community Youth Home	1
Returned from AWOL	6
Otherwise received	7
Total in institution during year	92
Returned to local supervision	13
Discharged without supervision	2
AWOL	10
Otherwise released	9
In Care, June 30, 1974	58
CEDAR LODGE	
In Care, July 1, 1973	17

TABLE VII—Continued

Transferred from Study	3
Returned from AWOL	5
Otherwise received	15
Total in school during year	40
Returned to local supervision	15
Transferred to Diagnostic Center	2
Transferred to Beaumont	4
Transferred to Hanover	3
Transferred to Exodus House	1
Discharged without supervision	3
AWOL	5
Otherwise released	7
Closed November 15, 1973	0

TABLE VIII
Virginia Training Schools
Per Capita Cost Statement
Year Ending June 30, 1974

DIVISION OF YOUTH SERVICES	RECEPTION AND DIAGNOSTIC CENTER FOR CHILDREN		BON AIR SCHOOL FOR GIRLS		JANIE PORTER BARRETT SCHOOL FOR GIRLS		BEAUMONT SCHOOL FOR BOYS		HANOVER SCHOOL FOR BOYS		PINECREST CENTER		NATURAL BRIDGE FORESTRY CAMP		JUVENILE VOCATIONAL INSTITUTE		HALFWAY HOUSES STATE		TOTAL STATE COST		HALFWAY HOUSES LAW ENFORCEMENT AND CRIMINAL JUSTICE GRANTS		TOTAL STATE AND FEDERAL COST	
	DAILY AVERAGE POPULATION																							
ADJUSTING APPROPRIATION FOR MAINTENANCE AND OPERATION	\$1,081,525		\$1,053,172		\$805,199		\$1,582,495		\$1,292,884		\$241,288		\$458,320		\$436,469		\$190,247		\$7,141,599		\$254,259		\$7,395,858	
	Expenditures	Per Capita Cost	Expenditures	Per Capita Cost	Expenditures	Per Capita Cost	Expenditures	Per Capita Cost	Expenditures	Per Capita Cost	Expenditures	Per Capita Cost	Expenditures	Per Capita Cost	Expenditures	Per Capita Cost	Expenditures	Per Capita Cost	Expenditures	Per Capita Cost	Expenditures	Per Capita Cost	Expenditures	Per Capita Cost
TYPE OF EXPENDITURES:																								
Personal Services	\$ 854,229	\$ 4,854	\$ 853,365	\$ 5,805	\$ 659,958	\$ 7,764	\$ 1,172,277	\$ 5,142	\$ 1,008,692	\$ 5,933	\$ 198,223	\$ 5,830	\$ 315,066	\$ 3,540	\$ 327,642	\$ 5,957	\$ 136,322	\$ 3,586	\$ 5,525,774	\$ 5,407	\$ 147,012	\$ 4,324	\$ 5,672,786	\$ 5,372
Contractual Services	79,072	449	61,826	421	44,891	528	75,052	329	71,614	421	14,530	427	27,627	310	28,774	523	11,237	296	414,623	406	24,745	728	439,368	416
Supplies and Materials																								
Food	73,881	420	60,882	414	43,032	506	120,015	526	85,834	595	14,148	416	37,458	421	29,697	540	13,661	360	478,608	468	11,103	327	489,711	464
Fuel	9,884	56	24,227	165	22,374	263	38,972	171	35,917	211	972	29	20,491	230	7,336	133	704	19	160,877	157	637	19	161,514	153
Wearing Apparel	11,796	67	17,801	121	12,869	151	23,584	103	22,748	134	4,125	121	9,619	108	3,016	55	253	7	105,811	104	38	1	105,849	100
All other Supplies and Materials	34,321	195	23,952	163	14,024	165	88,296	387	34,977	206	5,721	169	16,562	186	22,926	417	4,398	116	245,177	240	8,841	260	254,018	241
Grants - Shared Revenues			66				90												156					156
Equipment	3,674	21	4,004	27	1,336	16	46,201	203	14,040	83	974	29	22,678	255	8,906	162	8,756	230	110,569	108	35,626	1,049	146,195	138
Current Charges and Obligations	13,365	76	6,575	45	6,358	75	14,596	64	11,877	70	2,198	65	3,698	42	3,469	63	6,292	166	68,428	67	13,597	400	82,025	78
Pensions - Retirement and Insurance																								
Total Expense of Maintenance and Operations		\$6,138	\$1,052,698	\$7,161	\$804,842	\$9,468	\$1,579,083	\$6,925	\$1,285,699	\$ 7,563	\$ 240,891	\$ 7,085	\$ 453,199	\$ 5,092	\$ 431,766	\$ 7,850	\$ 181,623	\$ 4,780	\$ 7,110,023	\$ 6,957	\$ 242,935	\$ 7,145	\$ 7,352,958	\$ 6,963
Less: Institutional Earnings	8,763	50	7,154	49	5,048	59	23,779	104	9,652	57	1,448	43	5,933	67	1,980	36	3,292	87	67,049	66			67,049	63
Net Cost of Operation	\$ 1,071,459		\$1,045,544	\$7,112	\$799,794	\$9,409	\$1,555,304	\$6,821	\$1,276,047	\$ 7,506	\$ 239,443	\$ 7,042	\$ 447,266	\$ 5,025	\$ 429,786	\$ 7,814	\$ 178,331	\$ 4,693	\$ 7,042,974	\$ 6,891	\$ 242,935	\$ 7,145	\$ 7,285,909	\$ 6,900
ANALYSIS OF INSTITUTIONAL EARNINGS:																								
Rental of Quarters			\$ 3,268		\$ 978		\$ 14,909		\$ 5,924		\$ 660		\$ 2,160		\$ 945				\$ 28,844				\$ 28,844	
Food Service																			2,999				2,999	
Cost of Meals to Employees and Others	2,070		559	153	153		2,708		980		475		917		860				8,722				8,722	
Court Ordered Child Support Payments	6,343		3,327						2,697		256		1,245						23,795				23,795	
Revenue - Forestry Service													1,611						1,611				1,611	
Revenue - Miscellaneous	350				10		317		51		57								1,078				1,078	
TOTAL	\$ 8,763		\$ 7,154		\$ 5,048		\$ 23,779		\$ 9,652		\$ 1,448		\$ 5,933		\$ 1,980		\$ 3,292		\$ 67,049				\$ 67,049	
CAPITAL OUTLAYS	\$ 2,019		\$ 32,934		\$ 2,025		\$ 72,341		\$ 323,417		\$ 7		\$ 40,034		\$ 4,328		\$ 195		\$ 477,300				\$ 477,300	

TABLE IX
Virginia Correctional Institutions—Per Capita Cost Statement
 Year Ended June 30, 1974

	BUREAU OF CORRECTIONAL FIELD UNITS		STATE FARM		THE PENITENTIARY		INDUSTRIAL FARM FOR WOMEN		SOUTHAMPTON CORRECTIONAL FARM		ISLAND CORRECTIONAL FARM		PRE-RELEASE CENTER		TOTALS	
Average Daily Population	2,425		936		873		188		610		321		81		5,434	
Adjusted Appropriation for Maintenance & Operation	\$9,394,623.		\$5,273,701.		\$5,666,113.		\$1,587,413.		\$ 1,944,661		\$ 1,745,351		\$ 356,898		\$ 25,968,760	
	Expenditures	Per Capita	Expenditures	Per Capita	Expenditures	Per Capita	Expenditures	Per Capita	Expenditures	Per Capita	Expenditures	Per Capita	Expenditures	Per Capita	Expenditures	Per Capita
TYPE OF EXPENDITURES:																
Personal Services	\$ 5,335,285.	2,200.	\$ 3,666,313.	\$ 3,917.	\$ 3,789,269.	\$ 4,340.	\$ 1,151,970.	\$ 6,127.	\$ 1,280,099.	\$ 2,099.	\$ 1,238,104.	\$ 3,857.	\$ 240,121	\$ 2,964.	\$ 16,701,161.	\$ 3,073.
Food	1,358,822.	560.	529,414.	566.	685,032.	785.	107,561.	572.	197,721.	324.	149,243.	465.	11,240.	139.	3,039,133.	559.
Fuel	138,059	58.	218,253.	233.	107,493.	123.	70,316.	374.	28,497.	47.	42,517.	132.	3,618.	45.	608,753.	113.
Inmate Wearing Apparel	242,118.	100	83,755.	89.	60,930.	70.	7,250.	39.	17,995.	30.	22,457.	70.	2,332.	29.	436,837.	80.
All Other	2,315,929.	955	769,613.	822.	998,445.	1,144.	249,917.	1,330.	408,551.	669.	290,656.	906.	69,250.	855.	5,102,361.	939.
Total Expense of Maintenance & Operation	9,390,213.	3,872	\$ 5,267,348	\$ 5,627.	\$ 5,641,169.	\$ 6,462.	\$ 1,587,114.	\$ 8,442.	\$ 1,932,863.	\$ 3,169.	\$ 1,742,977.	\$ 5,430.	\$ 326,561.	\$ 4,032.	25,888,245.	4,764
Less: Institutional Earnings	2,544,455.	1,050.	336,281.	359.	10,215.	12.	77,690.	413.	152,011.	250.	138,777.	432.	28,734.	355.	3,288,163.	605.
Net Cost of Operation	6,845,758.	2,822.	\$ 4,931,067.	\$ 5,268.	\$ 5,630,954.	\$ 6,450.	\$ 1,509,424.	\$ 8,029.	\$ 1,780,852.	\$ 2,919.	\$ 1,604,200.	\$ 4,998.	\$ 297,827.	\$ 3,677.	\$ 22,600,082.	\$ 4,159.
ANALYSIS OF INSTITUTIONAL EARNINGS:																
Revenue from Convict Labor	\$2,049,841.16														\$2,049,841.16	
Sale of Farm and Dairy Products	164,015.26		283,426.92				\$ 51,064.06		\$ 130,562.36		\$ 114,206.86				743,275.46	
Rental of Quarters	18,394.16		11,067.90.				5,009.02		6,846.00		2,100.00		\$ 400.00		43,817.08	
Sale of Meals to Employees and Others	139,118.93		28,286.62		10,214.89		12,307.29		8,083.90		8,551.15				206,562.78	
Surplus Property Revenue	10,540.49		8,763.20						5,218.50		3,118.94				6,560.15	
Receipts from Work Release Program	176,380.00						7,810.00						28,334.00		212,524.00	
Miscellaneous Revenue	4,010.26		4,736.54				1,500.00		1,300.00		5,252.83				16,799.63	
Revenue from Forestry Service	3,235.50														3,235.50	
Sales of Manufactured Products											5,547.45				5,547.45	
TOTAL	\$2,544,454.78		\$ 336,281.00		\$ 10,214.89		\$ 77,690.37		\$ 152,010.76		\$ 138,777.00		\$ 28,734.00		\$3,288,163.21	
Total Capital Outlays	\$ 388,964.00		\$ 387,815.00				\$ 421,195.00		\$ 20,074.00		\$ 4,459.00		\$ 9,835.00		\$1,232,342.00	

Division of Corrections

TABLE X
DISTRIBUTION OF POPULATION IN THE CORRECTIONAL INSTITUTIONS

June 30, 1974

BLAND CORRECTIONAL FARM		PRE-RELEASE CENTER		TOTALS	
321		81		5,434	
1,745,351		\$ 356,898		\$ 25,968,760	
es	Per Capita	Expenditures	Per Capita	Expenditures	Per Capita
04.	\$ 3,857	\$ 240,121	\$ 2,964	\$ 16,701,161.	\$ 3,073.
43	465	11,240.	139.	3,039,133.	559.
17.	132.	3,518.	45.	608,753.	113.
57.	70.	2,332.	29.	436,837.	80.
56.	906.	69,250.	855.	5,102,361.	939.
77.	\$ 5,430.	\$ 326,561.	\$ 4,032.	25,888,245.	4,764
77.	432.	28,734.	355.	3,288,163.	605.
00.	\$ 4,998.	\$ 297,827.	\$ 3,677.	\$ 22,600,082.	\$ 4,159.
.86				\$2,049,841.16	
00		\$ 400.00		743,275.46	
.15				43,817.08	
194				206,562.78	
.83		28,334.00		6,560.15	
.45				212,524.00	
				16,799.63	
				3,235.50	
23		\$ 28,734.00		5,547.45	
00		\$ 9,835.00		\$3,288,163.21	
				\$1,232,342.00	

	FELONS	MISDEMEANANTS	TOTAL
Total Prisoner Population	5,306	580	5,886
The Penitentiary	776	-	776
State Farm	905	65	970
Southampton Correctional Farm	611	20	631
Bland Correctional Farm	246	12	258
State Industrial Farm for Women	141	37	178
Work Release	429	-	429
Pre-Release	83	-	83
CORRECTIONAL UNITS-TOTAL	2,115	446	2,561
Correctional Unit 1 - Putaski	58	7	65
Correctional Unit 2 - Caroline	100	6	106
Correctional Unit 3 - Nansemond	23	51	74
Correctional Unit 4 - Mecklenburg	98	1	99
Correctional Unit 5 - Floyd	45	-	45
Correctional Unit 6 - Woodbridge	37	-	37
Correctional Unit 7 - White Post	103	-	103
Correctional Unit 8 - Harrisonburg	25	-	25
Correctional Unit 9 - Rustburg	111	-	111
Correctional Unit 10 - Augusta	87	2	89
Correctional Unit 11 - Culpeper	71	1	72
Correctional Unit 12 - Fluvanna	11	57	68
Correctional Unit 13 - Pocahontas	169	4	173
Correctional Unit 14 - Pamunkey	-	-	-
Correctional Unit 15 - Chatham	80	2	82
Correctional Unit 16 - New Kent	17	72	89
Correctional Unit 17 - Haynesville	101	3	104
Correctional Unit 18 - Wise	8	78	86
Correctional Unit 20 - Capron	53	1	54
Correctional Unit 21 - Stafford	77	-	77
Correctional Unit 22 - Tidewater	66	-	66
Correctional Unit 23 - Halifax	90	4	94
Correctional Unit 24 - Smith Lake	8	61	69
Correctional Unit 25 - Botetourt	58	25	83
Correctional Unit 26 - Haymarket	5	62	67
Correctional Unit 27 - Dinwiddie	90	-	90
Correctional Unit 28 - Patrick	126	-	126
Correctional Unit 29 - Buchanan	55	1	56
Correctional Unit 30 - Northern Virginia	125	4	129
Correctional Unit 31 - Tazewell	45	2	47
Construction Force	28	1	29
St. Brides	145	1	146

TABLE XII
Misdemeanants Committed to State Institutions According to Court of Commitment

COUNTIES	STATE FARM	BLAND	SOUTHAMPTON	FIELD UNITS	WOMEN'S
Accomack					
Albemarle				4	3
Alleghany		5		6	
Amelia	7		1	3	1
Amherst				4	
Appomattox	4	1			
Arlington	1	1	4	8	
Augusta				6	
Bath		2			
Bedford	5	10	2	15	
Bland		1			
Botetourt	1	3			
Brunswick	2			1	
Buchanan		1		3	
Buckingham	3			9	
Campbell				2	2
Caroline				7	
Carroll		14		9	1
Charles City				15	3
Charlotte				1	
Chesterfield				7	
Clarke	28			9	3
Craig	1			2	
Culpeper		1			
Culpeper	5			2	2
Cumberland	1				
Dickenson	1	2		3	
Dinwiddie	6			4	1
Essex	2			2	1
Fairfax	2	14	5	38	4
Fauquier				6	
Floyd		3		1	
Fluvanna				2	1
Franklin				3	1
Frederick		1		3	
Giles		5		1	
Gloucester				1	
Goochland	44			3	16
Grayson		4		4	
Greene				5	
Greensville	1			10	1
Halifax				1	
Hanover	3			4	
Henrico	20		1	37	7
Henry	3	20		11	
Highland					
Isle of Wight				3	
James City					
King George	4		2	5	
King & Queen					
King William	1			1	
Lancaster	1			4	
Lee	1			3	
Loudoun	3			4	
Louisa	2			2	
Lunenburg	2			6	1
Madison				10	
Mathews					
Mecklenburg	8		3	12	1
Middlesex	1			1	
Montgomery		10		4	2
Nelson					
New Kent				1	
Northampton				2	
Northumberland				2	
Nottoway	8		1	6	2
Orange	18			2	2
Page		2	1	1	
Patrick		2		2	
Pittsylvania				3	1
Powhatan	10		1	1	1
Prince Edward	5			4	2

TABLE XI
Comparison by Years of Felons Committed to Receiving Unit of Correctional System

YEAR ENDED JUNE 30	PERCENT WHITE	PERCENT NON-WHITE	TOTAL ADMITTED	CHANGE FROM PREVIOUS YEARS	
				Increase	Decrease
1944	34.99	65.01	1,169		294
1945	41.33	58.67	1,251	82	
1946	35.88	64.12	1,438	187	
1947	36.36	63.64	1,584	146	
1948	42.07	57.93	1,595	11	
1949					
1950	45.36	54.64	1,763	173	
1951	48.14	51.86	1,824	56	
1952	45.14	54.86	1,637		187
1953	47.58	52.42	1,715	78	
1954	42.95	57.05	1,795	80	
1955					
1956	46.94	53.06	1,909	114	
1957	44.48	55.52	1,985	76	
1958	45.34	54.66	1,791		194
1959	46.99	53.01	1,930	139	
1960	49.93	50.07	2,099	169	
1961					
1962	50.07	49.93	2,155	56	
1963	49.72	50.28	1,971		184
1964	52.58	47.42	2,031	60	
1965	50.68	49.32	1,762		269
1966	50.46	49.54	1,966	204	
1967					
1968	49.68	50.32	1,707		259
1969	49.36	50.64	1,487		220
1970	47.94	52.06	1,504	17	
1971	45.10	54.90	1,439		65
1972	44.43	55.57	1,562	123	
1973					
1974	44.16	55.84	1,549		13
1975	45.03	54.97	1,850	301	
1976	46.26	53.74	2,021	171	
1977	45.83	54.17	2,494	473	
1978	45.65	54.35	2,230		264
1979					
1980					
1981					
1982					
1983					
1984					
1985					
1986					
1987					
1988					
1989					
1990					
1991					
1992					
1993					
1994					
1995					
1996					
1997					
1998					
1999					
2000					
2001					
2002					
2003					
2004					
2005					
2006					
2007					
2008					
2009					
2010					
2011					
2012					
2013					
2014					
2015					
2016					
2017					
2018					
2019					
2020					
2021					
2022					
2023					
2024					
2025					

TABLE XII—Continued

COUNTIES	STATE FARM	BLAND	SOUTHAMPTON	FIELD UNITS	WOMEN'S
Prince George	1			2	4
Prince William	3			15	2
Pulaski	1	18	1	9	
Rappahannock	2			1	
Richmond					2
Roanoke					
Rockbridge		4			
Rockingham			1	7	
Russell		9		4	
Scott		13		3	1
Shenandoah				3	
Smyth	1	4		19	5
Southampton			2	3	
Spotsylvania	1		2	5	
Stafford	4		1	10	2
Surry	2				
Sussex					
Tazewell	2	25		6	1
Warren	2	2		2	
Washington		16	1	8	2
Westmoreland	5			2	1
Wise		14		11	1
Wythe		18		12	
York	2		1	3	
TOTAL COUNTIES	230	225	28	456	80
CITIES					
Alexandria	1		4	12	
Bedford				4	
Bristol		9		2	
Buena Vista				5	3
Charlottesville	9			7	2
Chesapeake				3	1
Clifton Forge		1			
Colonial Heights					
Covington				1	2
Danville					
Emporia		1		12	
Fairfax		2			
Falls Church	1			1	
Franklin				8	
Fredericksburg	2		1		
Galax			5	18	6
Hampton	1			1	
Harrisonburg				1	
Hopewell	2				
Lexington		5	2	49	2
Lynchburg	3			6	1
Martinsville		5		3	
Nansemond				9	3
Newport News	1		2		
Norfolk	10	1	20	110	16
Norton				1	2
Petersburg	3			6	
Portsmouth	1		1		
Radford	2	5		3	
Richmond	28	1	2	34	5
Roanoke	2	9	1	43	1
Salem	1	4	1		
South Boston	5				
Staunton				7	1
Suffolk				6	
Virginia Beach	6			4	1
Waynesboro				1	
Williamsburg	2			10	1
Winchester				7	
TOTAL CITIES	81	43	39	374	47
GRAND TOTAL	311	268	67	830	127

TABLE XIII

Felons Committed to the Virginia State Corrections System
(By Court Committed from, According to Race and Sex)

Year Ended June 30, 1974

COUNTIES	WHITE			NON-WHITE			GRAND TOTAL
	Male	Female	Total	Male	Female	Total	
Accomack	5		5	6		6	11
Arlington	22		22	12		12	34
Berkeley	5		5	1		1	6
Bethesda	2		2	3		3	5
Berkeley	7		7	3		3	10
Bedford	2		2	1		1	3
Berkeley	30	2	32	15		15	47
Berkeley	19		19	2		2	21
Berkeley				1		1	1
Bedford	13		13	6		6	19
Bland	2		2	1		1	3
Botetourt	5		5				5
Brunswick	1		1	4		4	5
Buchanan	2		2				2
Buckingham	1		1	2		2	3
Campbell	10		10	2		2	12
Caroline	2		2	3		3	5
Carroll	1		1	1		1	2
Charles City				3		3	3
Charlotte	1		1	10		10	11
Chesterfield	21	1	22	5	1	6	28
Clarke							
Craig	1		1				1
Culpeper	3	1	4	7		7	11
Cumberland	1		1				1
Dickenson	1		1				1
Dinwiddie	2		2	10		10	12
Essex	4		4	2		2	6
Fairfax	78	2	80	42	1	43	123
Fauquier	1		1	2		2	3
Floyd	1		1	1		1	2
Fluvanna	1		1				1
Franklin	22		22	5	1	6	28
Frederick	7		7				7
Giles	3		3				3
Gloucester	2		2	1		1	3
Goochland	4		4	3	1	4	8
Grayson	5		5	2		2	7
Greene				2		2	2
Greensville	1		1	7	1	8	9
Halifax	2		2	6		6	8
Hanover	5		5	5	1	6	11
Henrico	23	1	24	28	2	30	54
Henry	26	1	27	17		17	44
Highland							
Isle of Wight	1		1	14		14	15
James City				1	1	2	2
King & Queen				2		2	2
King George							
King William				1		1	1
Lincoln	3		3	1		1	4
Louisiana	1		1				1
Loudoun	3		3	1		1	4
Louisiana	1		1	3	1	4	5
Lynchburg							
Madison	2		2	2		2	4
Mathews	1		1	2		2	3
Middlesex				5		5	5
Montgomery	6		6	1		1	7
Montgomery	2		2	2		2	4
New Kent	1		1	2		2	3
Northampton	1		1	11	1	12	13
Northumberland				1		1	1
Stafford	2		2	2		2	4
Stafford	6		6	2		2	8
Stafford	5		5				5

TABLE XIII—Continued
Felons Committed to the Virginia State Penal System
(By Court Committed from, According to Race and Sex)

Year Ended June 30, 1974

COUNTIES	WHITE			NON-WHITE			GRAND TOTAL
	Male	Female	Total	Male	Female	Total	
Patrick	4		4	1		1	5
Pittsylvania	6	1	7	7		7	14
Powhatan	7		7	5		5	12
Prince Edward				2		2	2
Prince George	3		3	1		1	4
Prince William	26	1	27	3		3	30
Pulaski	9		9	2		2	11
Rappahannock	3		3				3
Richmond				1		1	1
Roanoke	17		17	4		4	21
Rockbridge	3		3	2		2	5
Rockingham	17	1	18	2		2	20
Russell	12		12				12
Scott	1		1				1
Shenandoah	2		2	1		1	3
Smyth	8	1	9	2		2	11
Southampton	2	2	4	13	1	14	18
Spotsylvania	15		15	6		6	21
Stafford	7	2	9	7		7	16
Surry				2		2	2
Sussex				6		6	6
Tazewell	7	1	8				8
Warren	7		7	1		1	8
Washington	4		4		2	2	6
Westmoreland				9		9	9
Wise	3		3				3
Wythe	6	1	7	5		5	12
York	6		6	6		6	12
TOTAL COUNTIES	554	18	572	364	14	378	950

TABLE XIII—Continued
Felons Committed to the Virginia State Penal System
(By Court Committed from, According to Race and Sex)

Year Ended June 30, 1974

CITIES	WHITE			NON-WHITE			GRAND TOTAL
	Male	Female	Total	Male	Female	Total	
Alexandria	7		7	20		20	27
Bedford							
Bristol	6		6	7		7	13
Buena Vista							
Charlottesville	11		11	11		11	22
Chesapeake	22		22	21		21	43
Clifton Forge	1		1				1
Colonial Heights	3		3	1	1	2	5
Covington							
Danville	15		15	18	4	22	37
Emporia							
Fairfax	1		1	1		1	2
Falls Church							
Franklin							
Fredericksburg	10		10	5		5	15
Galax							
Hampton	11		11	23	1	24	35
Harrisonburg							
Hopewell	2		2	2	1	3	5
Lexington							
Lynchburg	17	2	19	15	1	16	35
Martinsville	16		16	18		18	34
Newport News	20	1	21	41	3	44	65
Norfolk	60	3	63	115	8	123	186
Norton	1		1	2		2	3
Petersburg	3	1	4	27	1	28	32
Portsmouth	16		16	59	2	61	77
Radford	2		2	1		1	3
Richmond	61	4	65	199	11	210	275
Roanoke	40	1	41	25	2	27	68
Salem	6		6	1		1	7
South Boston							
Staunton	6		6	8	1	9	15
Suffolk	7		7	34	2	36	43
Virginia Beach	35	1	36	31	1	32	68
Waynesboro	5		5	4		4	9
Williamsburg	3		3	10		10	13
Winchester	5		5				5
TOTAL CITIES	392	13	405	699	39	738	1,143
GRAND TOTAL	946	31	977	1,063	53	1,116	2,093

TABLE XIV
Jail Commitments and Prisoner Days
by Months
 Year Ended June 30, 1974

MONTH	COMMITMENTS	PRISONER DAYS
July 1973	13,472	104,546
August	12,977	104,316
September	11,458	99,043
October	13,456	100,460
November	11,201	96,380
December	10,945	94,274
January 1974	12,263	103,330
February	10,860	98,973
March	13,069	112,232
April	12,254	108,012
May	13,133	108,678
June	12,925	108,931
TOTAL	148,013	1,239,175

TABLE XV
Jail Commitments and Prisoner Days
for the Past Ten Years

FISCAL YEAR ENDED JUNE 30	COMMITMENTS	PRISONER DAYS
1965	127,993	1,340,892
1966	123,274	1,270,400
1967	121,665	1,176,682
1968	120,828	1,176,733
1969	126,662	1,172,444
1970	131,057	1,251,237
1971	131,439	1,372,350
1972	130,172	1,335,506
1973	136,486	1,202,089
1974	148,013	1,239,175
YEARLY AVERAGE	129,759	1,253,751

TABLE XVI
Probationers Under Supervision
 July 1, 1973—June 30, 1974

A. CASES UNDER SUPERVISION IN VIRGINIA.		
Total under supervision the first day of the year		6,019
RECEIVED FOR SUPERVISION DURING THE YEAR:		
New cases from court	3,680	
Restored to supervision	97	
Transferred from other districts	451	
Transferred from other states	531	
Virginia cases returned from other states	49	
Other	29	
Total received during the year		4,837
REMOVED FROM SUPERVISION DURING THE YEAR:		
Expiration of probation	931	
Released by court before expiration of term	1,076	
Died	54	
Probation revoked	282	
Warrant issued	199	
Transferred to other districts (including out-of-state cases)	451	
Virginia cases transferred to other states	258	
Out-of-state cases terminated	424	
Other	117	
Total terminated during the year		3,792
Total remaining under supervision at the end of the year		7,064
B. VIRGINIA CASES UNDER SUPERVISION IN OTHER STATES		
Total under supervision the first day of the year		425
Received for supervision during the year		425
RECEIVED FOR SUPERVISION DURING THE YEAR:		
New cases (transfers from units)	258	
Restored to supervision	3	
Other	0	
Transferred from other states	10	
Total received during the year		271
Total number under supervision during the year		696
REMOVED FROM SUPERVISION DURING THE YEAR:		
Sentence terminated	80	
Discharged by court order	82	
Died	0	
Probation revoked	4	
Warrants issued	12	
Transferred to other states	10	
Virginia cases returned to Virginia	49	
Other	0	
Total terminated during the year		237
Total remaining under supervision at the end of the year		459

TABLE XVII
Parolees Under Supervision

July 1, 1973—June 30, 1974

A. CASES UNDER SUPERVISION IN VIRGINIA.		
Total under supervision the first day of the year	2,473	
RECEIVED FOR SUPERVISION DURING THE YEAR:		
From Virginia institutions	1,376	
Restored to supervision	22	
Transferred from other districts	119	
Transferred from other states	173	
Virginia cases returned from other states	18	
Other	6	
Total received during the year		1,683
Total number under supervision during the year		4,156
REMOVED FROM SUPERVISION DURING THE YEAR:		
Discharged from parole	837	
Died	24	
Probation and Parole Board Warrant issued	333	
Transferred to other districts (including out-of-state cases)	119	
Virginia cases transferred to other states	32	
Out-of-state cases terminated	137	
Other	2	
Total terminated during the year		1,484
Total remaining under supervision at the end of the year		2,672
B. VIRGINIA CASES UNDER SUPERVISION IN OTHER STATES.		
Total under supervision the first day of the year		473
RECEIVED FOR SUPERVISION DURING THE YEAR:		
From Virginia institutions	166	
Restored to supervision	7	
Other	0	
Transferred from Virginia units	32	
Transferred from other states	14	
Total received during the year		219
Total under supervision during the year		692
REMOVED FROM SUPERVISION DURING THE YEAR:		
Sentence terminated	215	
Died	10	
Parole Board warrants issued	39	
Other	0	
Transferred to other states	14	
Virginia cases returned to Virginia	18	
Total removed during the year		206
Total remaining under supervision at the end of the year		396

TABLE XVIII
Pardonees Under Supervision

July 1, 1973-June 30, 1974

A. CASES UNDER SUPERVISION IN VIRGINIA.

Total under supervision the first day of the year	14
Received for supervision during the year	
From Virginia institutions	8
Restored to supervision	0
Transferred from other districts	1
Transferred from other states	1
Virginia cases returned from other states	0
Other	0
Total received during the year	10
Total number under supervision during the year	24
Removed from supervision during the year	
Expiration of pardon	4
Died	0
Probation and Parole Board Warrant issued	0
Transferred to other districts (including out-of-state cases)	1
Virginia cases transferred to other states	0
Out-of-state cases terminated	0
Other	0
Total terminated during the year	5
Total remaining under supervision at the end of the year	19
B. VIRGINIA CASES UNDER SUPERVISION IN OTHER STATES	
Total under supervision the first day of the year	5
Received for supervision during the year	
From Virginia institutions	3
Transferred from Virginia units	0
Transferred from other states	0
Restored to supervision	0
Other	0
Total received during the year	3
Total under supervision during the year	8
Removed from supervision during the year	
Sentence terminated	1
Died	0
Probation and Parole Board Warrants issued	0
Transferred to other states	0
Virginia cases returned to Virginia	0
Other	0
Total removed during the year	1
Total remaining under supervision at the end of the year	7

*Includes 25 paroled to Federal Detainers and 6 paroled to Central Office

SEX	PAROLEES		PARDONEES		PROBATIONERS	
	Virginia Cases in Virginia	Out of State Cases in Va.	Virginia Cases in Virginia	Out of State Cases in Va.	Virginia Cases in Virginia	Out of State Cases in Va.
Male: +1,310	155	167	8	3	1,376	468
Female: 66	11	6	8	3	3,287	63
TOTAL: 1,376	166	173	16	6	3,680	531
AGE						
17 & Under	41	3	2	1	93	35
18-21	421	31	2	1	1,707	215
22-30	592	78	1	2	1,345	203
31-40	198	37	3	3	327	52
41-60	112	19	2	1	198	25
Over 60	12	5	1	1	10	1
TOTAL	1,376	173	16	6	3,680	531
RACE						
White	561	121	7	1	2,584	435
Black	815	52	1	2	1,096	96
TOTAL	1,376	173	8	3	3,680	531
MARITAL STATUS						
Single	740	76	2	1	2,303	327
Married	381	62	3	1	874	139
Divorced	57	15	1	1	175	23
Separated	161	17	2	1	302	38
Widowed	36	4	2	1	22	2
Common-Law	1	3	1	1	4	2
TOTAL	1,376	173	8	3	3,680	531

Parolees, Pardonees and Probationers Received for Supervision

TABLE XIX

Probation and Parole Board

DURING YEAR ENDED JUNE 30, 1974

TABLE XIX—Continued

DEPENDENTS	PAROLEES			PARDONEES			PROBATIONERS	
	Virginia Cases in Virginia	Virginia Cases in Other States	Out of State Cases in Va.	Virginia Cases in Virginia	Virginia Cases in Other States	Out of State Cases in Va.	Va. Cases Received from Court During Year	Out of State Cases in Va.
None	837	118	101	5	1	1	2,467	364
1	150	15	24	1	1	1	428	59
2	143	12	22	1	1	1	391	51
3	103	10	12	1	1	0	190	37
4	70	5	7	1	1	1	108	12
5	32	3	2	1	1	1	46	4
6	17	1	3	1	1	1	30	3
7	7	1	1	1	1	1	11	1
8	12	1	1	1	1	1	3	1
9	2	1	1	1	1	1	2	1
10	3	1	1	1	1	1	3	1
11	1	1	1	1	1	1	1	1
12	1	1	1	1	1	1	1	1
13	1	1	1	1	1	1	1	1
14	1	1	1	1	1	1	1	1
Total	1,376	169	173	8	3	1	3,680	531
EDUCATION								
None	139	19	12	1	2	1	90	27
1st Grade	139	6	1	1	1	1	6	1
2nd Grade	13	1	1	1	1	1	12	1
3rd Grade	66	4	3	1	1	1	30	1
4th Grade	113	12	1	1	1	1	60	3
5th Grade	139	7	4	1	1	1	75	5
6th Grade	143	24	8	1	1	1	110	8
7th Grade	339	43	16	2	1	1	256	15
8th Grade	90	15	25	2	1	1	360	27
9th Grade	75	10	19	1	1	1	409	44
10th Grade	49	7	17	1	1	1	465	64
11th Grade	30	6	15	1	1	1	376	56
Graduate	33	13	35	1	1	1	1,118	208
1st Yr. College	9	1	10	1	1	1	107	30
2nd Yr. College	1	1	5	1	1	1	83	18
3rd Yr. College	1	1	1	1	1	1	49	10
Graduate	1	1	1	1	1	1	74	13
Total	1,376	169	173	8	3	1	3,680	531

TABLE XX
Virginia Cases Supervised by Other States
And Out-of-State Cases Supervised by Virginia

June 30, 1974

	VIRGINIA CASES SUPERVISED BY OTHER STATES			OUT-OF-STATE CASES SUPERVISED BY VIRGINIA		
	Parole	Probation	Pardon	Parole	Probation	Pardon
Alabama	3	3			5	
Alaska	1					
Arizona		4			3	
Arkansas		2		1		
California	9	10		11	24	
Colorado	2	6		4	3	
Connecticut	8	4		5	4	
Delaware	3	5		1	5	
Florida	29	35		17	78	
Georgia	13	10		5	11	
Hawaii					1	
Idaho						
Illinois	4	12		1	2	
Indiana	3	4		1	2	
Iowa	1	2		1		
Kansas		1		2		
Kentucky	10	6		6	3	
Louisiana		5		2	5	
Maine		1				
Maryland	42	75	1	26	112	
Massachusetts	6	8		2	5	
Michigan	9	13	1		6	
Minnesota	2	2	1			
Mississippi	2	4	1	2	2	
Missouri	5	5			7	
Montana					1	
Nebraska				1		
Nevada	1	1			2	
New Hampshire		3			3	
New Jersey	24	18		7	28	
New Mexico	1	2		1	8	
New York	34	18		20	30	
North Carolina	69	69		53	221	
North Dakota						
Ohio	13	22		3	6	
Oklahoma	3	4		1	1	
Oregon		3		1	3	
Pennsylvania	30	26	2	15	13	
Puerto Rico	1				2	
Rhode Island		2			1	
South Carolina	12	12	1	6	16	
South Dakota						
Tennessee	17	22		4	18	
Texas	17	10		8	27	
Utah		1			1	
Vermont		1			2	
Washington	2	3		1	4	
West Virginia	18	22		16	16	1
Wisconsin	1	1				
Wyoming	0	2		1	3	
Washington, D. C.	1			10	6	
TOTAL	396	459	7	235	690	1

TABLE XXI
Virginia Cases Under Supervision by Counties and Cities

June 30, 1974

COUNTIES	PROBATIONERS	PAROLEES	PARDONEES
Accornack	27	15	2
Albemarle	28	7	
Alleghany	35	6	
Amelia	6	4	
Amherst	39	11	
Appomattox	17	2	
Arlington	182	47	
Augusta	57	15	
Bah	12	2	
Bedford	63	13	
Bland	4	2	
Botetourt	33	6	
Brunswick	33	9	
Buchanan	23	14	
Buckingham	19	5	
Campbell	39	14	
Caroline	6	7	
Carroll	53	9	
Charles City	9	1	
Charlotte	6	4	
Chesterfield	63	32	
Clarke	12	6	
Craig	4		
Culpeper	23	7	
Cumberland	13	3	
Dickerson	8		
Dinwiddie	8	17	
Essex	12	4	
Fairfax	413	102	1
Fauquier	47	8	
Floyd	6	1	
Fluvanna	11	4	
Franklin	63	27	
Frederick	37	9	
Giles	41	12	
Gloucester	16	4	
Goochland	5	6	
Grayson	45	6	
Greene	4	8	
Greensville	32	8	
Halifax	28	17	
Hanover	31	19	
Henrico	99	55	
Henry	75	37	
Highland		1	
Isle of Wight	53	20	
James City			
King George	3		
King & Queen	6	3	
King William	5	3	
Lancaster	10		
Lee	8	2	
Loudon	29	9	
Louisa	21	5	
Lunenburg	11	4	
Madison	5	2	
Mathews	5	3	
Mecklenburg	28	7	
Middlesex	7	4	
Montgomery	63	8	
Nelson	13	2	
New Kent	9	2	
Northampton	17	7	
Northumberland	5	4	

TABLE XXI—Continued

COUNTIES	PROBATIONERS	PÁROLEES	PARDONEES
Nottoway	12	7	
Orange	21	6	
Page	40	11	
Patrick	36	17	
Pittsylvania	84	30	
Powhatan	3	4	
Prince Edward	30	7	
Prince George	11	4	
Prince William	159	32	1
Pulaski	56	33	
Rappahannock	9	1	
Richmond	8	4	
Roanoke	160	30	
Rockbridge	67	3	
Rockingham	89	47	1
Russell	26	3	
Scott	13	3	
Shenandoah	30	2	
Smyth	49	11	
Southampton	41	15	
Spotsylvania	17	3	
Stafford	15	12	
Surry	8	3	
Sussex	20	5	
Tazewell	52	17	
Warren	46	5	
Washington	49	7	1
Westmoreland	12	2	
Wise	26	7	
Wythe	56	8	
York	10	3	
CITIES			
Alexandria	154	50	
Bristol	18	7	
Buena Vista	12	4	
Charlottesville	71	29	1
Chesapeake	136	49	
Clifton Forge	10		
Colonial Heights	17	5	
Danville	176	45	
Fredericksburg	8	9	
Galax	24	7	
Hampton	119	52	
Hopewell	45	8	
Lynchburg	168	45	
Martinsville	71	38	1
Nansemond			
Newport News	319	93	
Norfolk	439	271	
Petersburg	71	58	
Portsmouth	177	110	1
Radford	25	4	
Richmond	681	471	5
Roanoke	345	93	
Salem	63	8	
Staunton	43	7	
Suffolk	112	46	
Virginia Beach	236	57	1
Waynesboro	32	6	1
Williamsburg	54	19	
Winchester	39	24	
Washington, D. C.	59	44	1
TOTAL	7064	2672	10

TABLE XXII

Probation Cases Received for Supervision by Counties and Cities

July 1, 1973 through June 30, 1974

COUNTIES		COUNTIES	
Accomack	8	Nottoway	1
Albermarle	17	Orange	16
Alleghany	13	Page	20
Amelia	3	Patrick	10
Amherst	9	Pittsylvania	55
Appomattox	8	Powhatan	1
Arlington	87	Prince Edward	15
Augusta	29	Prince George	11
Bath	5	Prince William	66
Bedford	25	Pulaski	37
Bland	4	Rappahannock	5
Botetourt	15	Richmond	2
Brunswick	8	Roanoke	57
Buchana	8	Rockbridge	49
Buckingham	5	Rockingham	30
Campbell	19	Russell	16
Caroline	6	Scott	4
Carroll	39	Shenandoah	7
Charles City	2	Smyth	28
Charlotte		Southampton	23
Charterfield	25	Spotsylvania	1
Clay	3	Stafford	10
Craig	3	Surry	3
Culpeper	12	Sussex	7
Cumberland	8	Tazewell	25
Dickenson	4	Warren	25
Dinwiddie	3	Washington	31
Essex	9	Westmoreland	11
Fairfax	259	Wise	10
Fauquier	19	Wythe	25
Floyd	10	York	21
Fluvanna	1		
Franklin	42		
Frederick	6		
Giles	23		
Gloucester	12		
Goochland	8		
Grayson	26		
Greene			
Greensville	14		
Halifax	6		
Hanover	9		
Henrico	72		
Henry	27		
Highland			
Isle of Wight	29		
James City			
King George	1		
King and Queen	5		
King William	1		
Lancaster	9		
Lee	2		
Loudoun	13		
Louisa	14		
Lunenburg	4		
Madison	3		
Mathews	2		
Mecklenburg	17		
Middlesex			
Montgomery	38		
Nelson	8		
New Kent	1		
Northampton	9		
Northumberland	3		
CITIES		CITIES	
Alexandria	52	Alexandria	52
Bristol	8	Bristol	8
Buena Vista	5	Buena Vista	5
Charlottesville	64	Charlottesville	64
Chesapeake	51	Chesapeake	51
Clifton Forge	1	Clifton Forge	1
Colonial Heights	8	Colonial Heights	8
Danville	108	Danville	108
Fredericksburg	3	Fredericksburg	3
Hampton	38	Hampton	38
Hopewell	12	Hopewell	12
Lynchburg	101	Lynchburg	101
Martinsville	28	Martinsville	28
Nansemond	18	Nansemond	18
Newport News	271	Newport News	271
Norfolk	298	Norfolk	298
Petersburg	36	Petersburg	36
Portsmouth	94	Portsmouth	94
Radford	7	Radford	7
Richmond	446	Richmond	446
Roanoke	125	Roanoke	125
Salem	26	Salem	26
Staunton	17	Staunton	17
Suffolk	30	Suffolk	30
Virginia Beach	99	Virginia Beach	99
Waynesboro	3	Waynesboro	3
Williamsburg	25	Williamsburg	25
Winchester	14	Winchester	14
TOTAL	3680	TOTAL	3680

TABLE XXIII
Warrants Issued and Action Taken

July 1, 1973—June 30, 1974

TOTAL ISSUED 456

VIOLATIONS

Technical 187
 Misdemeanor 54
 Felony 121
 Technical and Misdemeanor 39
 Technical and Felony 41
 Felony and Misdemeanor 12
 Technical, Felony and Misdemeanor 2

ACTION TAKEN

Withdrawn 45
 Restored to Supervision 8
 Revoked 174
 Parole Continued after Board Interview 9
 Voided Not Signed 3
 Voided Signed 1
 Discharged before Revocation 6
 Outstanding 210

**ACTION TAKEN ON WARRANTS ISSUED PRIOR
 TO JULY 1, 1973**

Withdrawn 11
 Restored to Supervision 4
 Revoked 84
 Discharged before Revocation 8
 Parole Continued after Board Interview 3
 Died 1

END

7 10/15/74